

LEA Name : Pottstown SD
Address : 230 Beech St
Pottstown , PA 19464

County : Montgomery
AUN Number : 123466403
LEA Type : SD

Annual Financial Report
Accuracy Certification Statement

For Fiscal Year Ending

6/30/2019

Pennsylvania Department of Education

&

Office of Comptroller Operations

PDE-2056: Intermediate Unit

PDE-2057: School District, AVTS/CTC, Charter School,
and Special Program Jointure

CERTIFICATION: By signing this page I agree that the electronic data submitted is a complete and accurate statement of the financial operations and status of the local education agency for the fiscal year. It has been prepared in accordance with generally accepted accounting principles and established Commonwealth of PA reporting guidelines.



Chief School Administrator Signature

Date

1/21/20



Board Secretary Signature

Date

1/17/20

Maureen Jampo

Contact Person

mjampo@pottstownk12.org

Contact Person E-mail Address

(610)970-6611

Ext :

Contact Person Telephone Number

(610)326-6540

Contact Person Fax Number

Audit Certification
Annual Financial Report:
For Fiscal Year Ending **6/30/2019**
(Pursuant to PA School Code Section 218(b))

LEA Name : Pottstown SD
AUN Number : 123466403
County : Montgomery

Audit Certification Due: 12/31/2019

This certification is applicable to the Annual Financial Report data submitted
through the Consolidated Financial Reporting System on: 1/21/2020
Date

Auditing Firm:

Herbein and Company, Inc.
2763 Century Blvd.
Reading PA 19610

CERTIFICATION: By signing this page I agree that the financial statements of the school have been properly audited as noted above pursuant to Article XXIV, and in the auditor's professional opinion, the Annual Financial Report (PDE-2057) submitted on the date referenced is materially consistent with the audited financial statements.

Chief School Administrator


Signature Date 1-21-20

Board Secretary


Signature Date 1/17/20

Maureen Jampo

Contact Person

mjampo@pottstownk12.org

Contact Person E-mail Address

(610)970-6611

Ext :

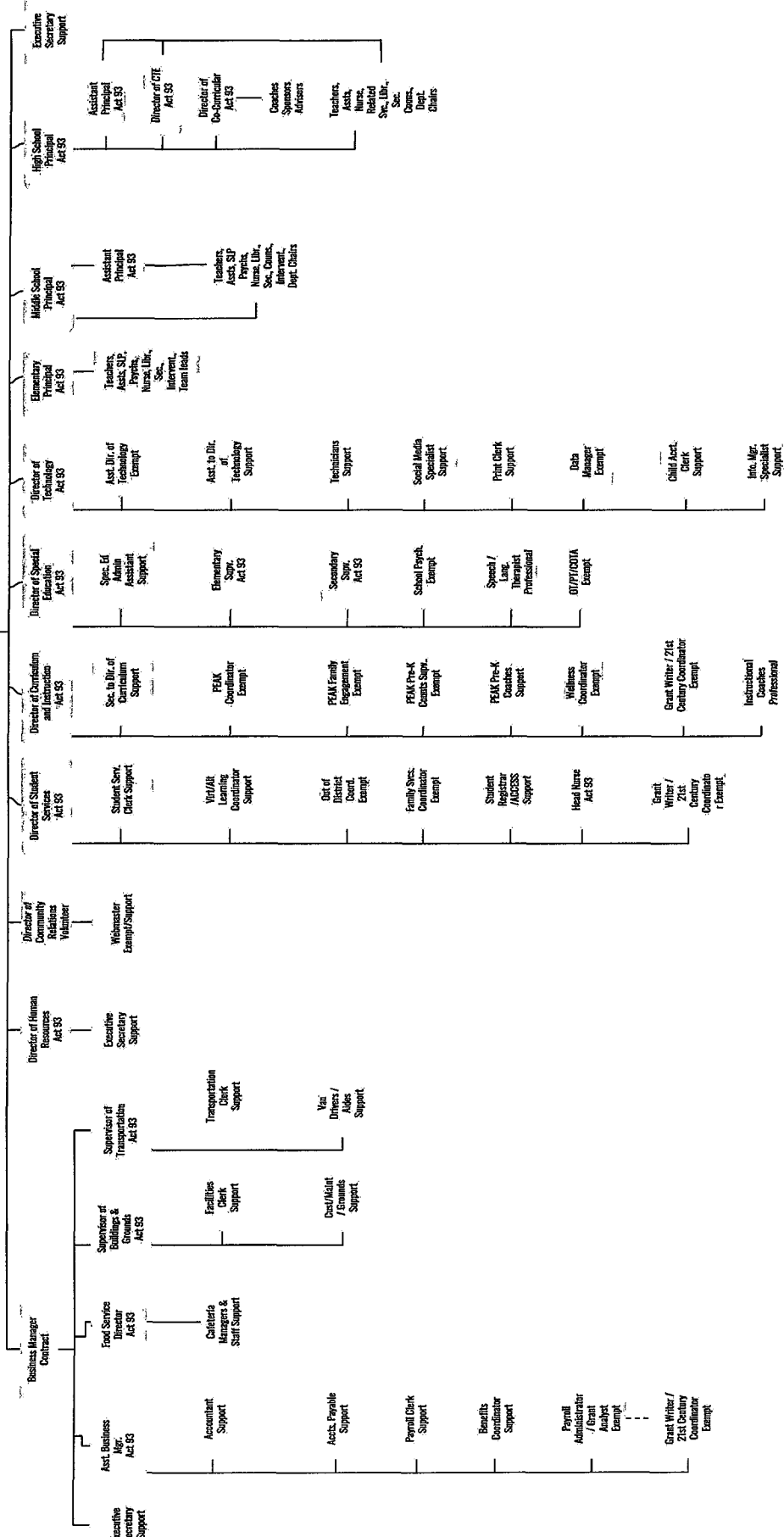
Contact Person Telephone Number

(610)326-6540

Contact Person Fax Number

9-Month
School Board

Superintendent
Contract



Pottstown School District - March 15, 2018

<u>Val Number</u>	<u>Description</u>	<u>Justification</u>
12195	<p>REG: Current Year AFR Beginning Fund Balance must equal Prior Year AFR Ending Fund Balance. Justifications to this error must fully explain the situation that prompted a fund balance restatement. "Auditor Adjustment" is not a sufficient justification.</p> <p>Total Govt Funds, Beg Bal: \$11,418,417.00 PY Ending Bal, Govt Funds: \$10,642,006.00</p>	<p>Fund 10 beginning fund balance was restated by adding \$776,411 to accrue for state subsidy receivable for social security and retirement on accrued summer pays. This receivable had not historically been reported due to the materiality threshold.</p>
12196	<p>REG - Fund 10: Current Year AFR Beginning Fund Balance must equal Prior Year AFR Ending Fund Balance. Justifications to this error must fully explain the situation that prompted a fund balance restatement. "Auditor Adjustment" is not a sufficient justification.</p> <p>REG Fund 10, Beg Fund Bal: \$9,835,021.00 PY Ending Fund Balance: \$9,058,610.00</p>	<p>Fund 10 beginning fund balance was restated by adding \$776,411 to accrue for state subsidy receivable for social security and retirement on accrued summer pays. This receivable had not historically been reported due to the materiality threshold.</p>
15000	<p>NAP - Fund 51: Total Net Position must equal REP - Fund51: Net Position - End of Year</p> <p>Total Net Position (NAP), Fund 51: \$-572,242.00 Net Position, End of Yr (REP), Fund 51: \$-443,210.00</p>	<p>Difference of \$129,031 is beginning balance for OPEB liability in 2017-18 as a result of the implementation of GASB 75 in relation to Other Post Employment Benefits</p>
15020	<p>NAP: Total Net Position must equal REP: Net Position - End of Year</p> <p>Total Net Position (NAP), Tot:\$-572,242.00 Net Position, End of Yr (REP), Tot: \$-443,210.00</p>	<p>Difference of \$129,031 is beginning balance for OPEB liability in 2017-18 as a result of the implementation of GASB 75 in relation to Other Post Employment Benefits</p>
30390	<p>Revenue Detail: AFR amount must equal PDE FAI System amount.</p> <p>7110, AFR Rev Detail: \$11,445,947.20 7110, PDE FAI System: \$11,445,983.21</p>	<p>\$36.01 was recorded as revenue in 17-18.</p>
30470	<p>Revenue Detail: AFR amount must equal or exceed PDE FAI System amount.</p> <p>7299, AFR Rev Detail: \$0.00 7299, PDE FAI System: \$2,771.66</p>	<p>\$2,771.66 was recorded as revenue in 17-18.</p>
41162	<p>Expenditure Detail, Salaries (Object 100) and Benefits (Object 200 series): Amounts must be entered for both Salaries and Benefits.</p> <p>Please verify following fund and function codes: Fund 10 Function 2711; Fund 10 Function 2719;</p>	<p>Transportation Dept Supervisor retired. Her last paycheck was 7/13/18 for the period ending 6/30/18. Her payroll, retirement incentive, SS and PSERS were accrued in 2017-18. Her med insurance exp and SS on Retirement incentive were expensed in 2018-19.</p>

42420 Expenditure Detail: Total current year 2700-513 expenditure varies from prior year by 10%. Correct the data or enter a justification.

2700-513, AFR Exp Detail: \$2,296,464.52
2700-513, PY AFR Amount: \$1,499,893.11

The transportation department was discontinued. All transportation services are being outsourced to a contracted carrier, therefore the cost has increased by \$796,571.

LEA : 123466403 Pottstown SD

Printed 2/6/2020 1:13:00 PM

Amounts Expressed in Whole Dollars		<u>General Fund</u> <u>(10)</u>	<u>Public Purpose Trust</u> <u>(27)</u>	<u>Other Compt Approved</u> <u>(28)</u>	<u>Athletic / Activity</u> <u>(29)</u>	<u>Capital Reserve (690.</u> <u>1850)</u> <u>(31)</u>
Assets And Deferred Outflows Of Resources						
Assets						
0100 Cash and Cash Equivalents		11,148,387			116,977	
0110 Investments		6,000,000				
0120 Taxes Receivable		2,913,155				
0130 Due From Other Funds		8,398				
0141 Due From Other Governments		21,125				
0142 State Revenue Receivable		3,591,068				
0143 Federal Revenue Receivable		426,217				
0145 Other Intergovernmental Revenue Receivable						
0146 Due from Primary Government						
0147 Due from Component Unit						
0150 Other Receivables		121,471				
0170 Inventories		23,780				
0180 Prepaid Expenses (Expenditures)		23,683				
0190 Other Current Assets						
Total Assets		\$24,277,284			\$116,977	
0910 Deferred Outflows of Resources						
Total Assets And Deferred Outflows Of Resources		\$24,277,284			\$116,977	

LEA : 123466403 Pottstown SD

Printed 2/6/2020 1:13:00 PM

Amounts Expressed in Whole Dollars		<u>Capital Reserve (1431)</u> <u>(32)</u>	<u>Other Capital Projects</u> <u>Fund</u> <u>(39)</u>	<u>Debt Service</u> <u>(40)</u>	<u>Permanent</u> <u>(90)</u>	<u>Total Governmental</u> <u>Funds</u>
Assets And Deferred Outflows Of Resources						
Assets						
0100	Cash and Cash Equivalents		846,891	15,092		12,127,347
0110	Investments					6,000,000
0120	Taxes Receivable					2,913,155
0130	Due From Other Funds		1,405,898			1,414,296
0141	Due From Other Governments					21,125
0142	State Revenue Receivable					3,591,068
0143	Federal Revenue Receivable					426,217
0145	Other Intergovernmental Revenue Receivable					
0146	Due from Primary Government					
0147	Due from Component Unit					
0150	Other Receivables					121,471
0170	Inventories					23,780
0180	Prepaid Expenses (Expenditures)					23,683
0190	Other Current Assets					
Total Assets			\$2,252,789	\$15,092		\$26,662,142
0910	Deferred Outflows of Resources					
Total Assets And Deferred Outflows Of Resources			\$2,252,789	\$15,092		\$26,662,142

LEA : 123466403 Pottstown SD

Printed 2/6/2020 1:13:00 PM

Amounts Expressed in Whole Dollars	<u>General Fund</u> <u>(10)</u>	<u>Public Purpose Trust</u> <u>(27)</u>	<u>Other Compt Approved</u> <u>(28)</u>	<u>Athletic / Activity</u> <u>(29)</u>	<u>Capital Reserve (690.</u> <u>1850)</u> <u>(31)</u>
Liabilities And Deferred Inflows Of Resources And Fund Balances					
Liabilities					
0400 Due to Other Funds	2,435,265				
0411 Due to Other Governments					
0412 Due to Primary Government					
0413 Due to Component Unit					
0420 Accounts Payable	2,143,979			4,067	
0430 Contracts Payable					
0440 Current Portion of Long-Term Debt					
0450 Short-Term Payables					
0461 Accrued Salaries and Benefits	6,016,122				
0462 Payroll Deductions and Withholding	284,173				
0480 Unearned Revenues	212,051				
0490 Other Current Liabilities					
Total Liabilities	\$11,091,590			\$4,067	
0950 Deferred Inflows of Resources	2,375,647				
Fund Balances					
0810 Nonspendable Fund Balance	47,463				
0820 Restricted Fund Balance				112,910	
0830 Committed Fund Balance	3,799,409				
0840 Assigned Fund Balance	1,818,950				
0850 Unassigned Fund Balance	5,144,225				
Total Fund Balances	\$10,810,047			\$112,910	
Total Liabilities, Deferred Inflows Of Resources And Fund Balances	\$24,277,284			\$116,977	

LEA : 123466403 Pottstown SD

Printed 2/6/2020 1:13:00 PM

Amounts Expressed in Whole Dollars		<u>Capital Reserve (1431)</u> <u>(32)</u>	<u>Other Capital Projects</u> <u>Fund</u> <u>(39)</u>	<u>Debt Service</u> <u>(40)</u>	<u>Permanent</u> <u>(90)</u>	<u>Total Governmental</u> <u>Funds</u>
Liabilities And Deferred Inflows Of Resources And Fund Balances						
Liabilities						
0400	Due to Other Funds		93,410			2,528,675
0411	Due to Other Governments					
0412	Due to Primary Government					
0413	Due to Component Unit					
0420	Accounts Payable					2,148,046
0430	Contracts Payable					
0440	Current Portion of Long-Term Debt					
0450	Short-Term Payables					
0461	Accrued Salaries and Benefits					6,016,122
0462	Payroll Deductions and Withholding					284,173
0480	Unearned Revenues					212,051
0490	Other Current Liabilities					
Total Liabilities			\$93,410			\$11,189,067
0950	Deferred Inflows of Resources					2,375,647
Fund Balances						
0810	Nonspendable Fund Balance					47,463
0820	Restricted Fund Balance		2,159,379	15,092		2,287,381
0830	Committed Fund Balance					3,799,409
0840	Assigned Fund Balance					1,818,950
0850	Unassigned Fund Balance					5,144,225
Total Fund Balances			\$2,159,379	\$15,092		\$13,097,428
Total Liabilities, Deferred Inflows Of Resources And Fund Balances			\$2,252,789	\$15,092		\$26,662,142

Amounts Expressed in Whole Dollars	General Fund (10)	Public Purpose Trust (27)	Other Compt Approved (28)	Athletic / Activity (29)	Capital Reserve (690. 1850) (31)
Revenues					
6000 Revenue from Local Sources	34,987,934			51,916	
7000 Revenue from State Sources	27,448,466				
8000 Revenue from Federal Sources	2,614,520				
Total Revenues	\$65,050,920			\$51,916	
Expenditures					
1000 Instruction	39,967,612				
2000 Support Services	18,196,035				
3000 Operation of Non-Instructional Services	980,488			47,173	
4000 Facilities Acquisition, Construction and Improvement Services	796,033				
5110 Debt Service	3,621,432				
5130 Refund of Prior Year Revenues / Receipts	5,356				
Total Expenditures	\$63,566,956			\$47,173	
Excess (Deficiency) Of Revenues Over Expenditures	\$1,483,964			\$4,743	
Other Financing Sources (Uses)					
9110 Face Value of Bonds Issued					
9120 Proceeds from Refunding of Bonds					
9130 Bond Premiums					
9200 Proceeds from Extended-Term Financing					
9300 Interfund Transfers - IN	2,507				
9400 Sale of or Compensation for Loss of Fixed Assets	138,556				
9710 Transfers from Component Units					
9720 Transfers from Primary Governments					
9910 Other Financing Sources Not Listed in the 9000 Series					
9990 Insurance Recoveries					
5120 Debt Service – Refunded Bonds					
5150 Bond Discounts					
5200 Interfund Transfers – Out	650,000				
5300 Transfers Out to Component Units/Primary Governments					
Total Other Financing Sources (Uses)	(\$508,937)				

LEA : 123466403 Pottstown SD

Printed 2/6/2020 1:13:08 PM

Amounts Expressed in Whole Dollars		<u>Capital Reserve (1431</u> <u>(32)</u>	<u>Other Capital Projects</u> <u>Fund</u> <u>(39)</u>	<u>Debt Service</u> <u>(40)</u>	<u>Permanent</u> <u>(90)</u>	<u>Total Governmental</u> <u>Funds</u>
Revenues						
6000	Revenue from Local Sources		42,851	4		35,082,705
7000	Revenue from State Sources					27,448,466
8000	Revenue from Federal Sources					2,614,520
Total Revenues			\$42,851	\$4		\$65,145,691
Expenditures						
1000	Instruction					39,967,612
2000	Support Services			377,232		18,573,267
3000	Operation of Non-Instructional Services					1,027,661
4000	Facilities Acquisition, Construction and Improvement Services					796,033
5110	Debt Service			104,389		3,725,821
5130	Refund of Prior Year Revenues / Receipts					5,356
Total Expenditures				\$481,621		\$64,095,750
Excess (Deficiency) Of Revenues Over Expenditures			\$42,851	(\$481,617)		\$1,049,941
Other Financing Sources (Uses)						
9110	Face Value of Bonds Issued					
9120	Proceeds from Refunding of Bonds			16,355,000		16,355,000
9130	Bond Premiums			27,515		27,515
9200	Proceeds from Extended-Term Financing					
9300	Interfund Transfers - IN		650,000			652,507
9400	Sale of or Compensation for Loss of Fixed Assets					138,556
9710	Transfers from Component Units					
9720	Transfers from Primary Governments					
9910	Other Financing Sources Not Listed in the 9000 Series					
9990	Insurance Recoveries					
5120	Debt Service – Refunded Bonds			15,892,000		15,892,000
5150	Bond Discounts					
5200	Interfund Transfers – Out			2,507		652,507
5300	Transfers Out to Component Units/Primary Governments					
Total Other Financing Sources (Uses)			\$650,000	\$488,008		\$629,071

Amounts Expressed in Whole Dollars		<u>General Fund</u> <u>(10)</u>	<u>Public Purpose Trust</u> <u>(27)</u>	<u>Other Compt Approved</u> <u>(28)</u>	<u>Athletic / Activity</u> <u>(29)</u>	<u>Capital Reserve</u> <u>(690.</u> <u>1850)</u> <u>(31)</u>
Special And Extraordinary Items						
9920	Special Items – Gains					
9930	Extraordinary Items – Gains					
5520	Special Items – Losses					
5530	Extraordinary Items – Losses					
Net Change In Fund Balances		\$975,027			\$4,743	
Fund Balance						
0001	Fund Balance - Beginning of Fiscal Year	9,835,021			108,167	
Fund Balance - End Of Year		\$10,810,048			\$112,910	

Amounts Expressed in Whole Dollars		<u>Capital Reserve (1431)</u> <u>(32)</u>	<u>Other Capital Projects</u> <u>Fund</u> <u>(39)</u>	<u>Debt Service</u> <u>(40)</u>	<u>Permanent</u> <u>(90)</u>	<u>Total Governmental</u> <u>Funds</u>
Special And Extraordinary Items						
9920	Special Items – Gains					
9930	Extraordinary Items – Gains					
5520	Special Items – Losses					
5530	Extraordinary Items – Losses					
Net Change In Fund Balances			\$692,851	\$6,391		\$1,679,012
Fund Balance						
0001	Fund Balance - Beginning of Fiscal Year		1,466,528	8,701		11,418,417
Fund Balance - End Of Year			\$2,159,379	\$15,092		\$13,097,429

LEA : 123466403 Pottstown SD

Printed 2/6/2020 1:13:10 PM

Amounts Expressed in Whole Dollars	<u>Food Service</u> <u>(51)</u>	<u>Child Care</u> <u>Operations</u> <u>(52)</u>	<u>Other Enterprise</u> <u>(58)</u>	<u>TOTAL</u>	<u>Internal Service</u> <u>(60)</u>
Assets And Deferred Outflows Of Resources					
Current Assets					
0100 Cash and Cash Equivalents	1,141,092			1,141,092	2,173,053
0110 Investments					
0130 Due From Other Funds	9,164			9,164	1,247,937
0141 Due From Other Governments					
0142 State Revenue Receivable	2,362			2,362	
0143 Federal Revenue Receivable	58,396			58,396	
0146 Due from Primary Government					
0147 Due from Component Unit					
0150 Other Receivables	72			72	217,012
0170 Inventories	18,531			18,531	
0180 Prepaid Expenses (Expenditures)					131,000
0190 Other Current Assets					
Total Current Assets	\$1,229,617			\$1,229,617	\$3,769,002
Noncurrent Assets					
0211 Land					
0212 Site Improvements (Net)					
0220 Buildings and Building Improvements (Net)					
0230 Machinery, Equipment and Furniture (Net)	69,546			69,546	
0250 Construction in Progress					
0260 Long Term Prepayments					
0290 Other Noncurrent Assets					
Total Noncurrent Assets	\$69,546			\$69,546	
0910 Deferred Outflows of Resources	433,777			433,777	
Total Assets And Deferred Outflows Of Resources	\$1,732,940			\$1,732,940	\$3,769,002

LEA : 123466403 Pottstown SD

Printed 2/6/2020 1:13:10 PM

Amounts Expressed in Whole Dollars	Food Service (51)	Child Care Operations (52)	Other Enterprise (58)	TOTAL	Internal Service (60)
Liabilities And Deferred Inflows Of Resources And Net Position					
Current Liabilities					
0400 Due to Other Funds	142,723			142,723	
0411 Due to Other Governments					
0413 Due to Component Unit					
0420 Accounts Payable	1,324			1,324	
0430 Contracts Payable					
0440 Current Portion of Long-Term Debt					
0450 Short-Term Payables					
0461 Accrued Salaries and Benefits	21,092			21,092	
0462 Payroll Deductions and Withholding					
0480 Unearned Revenues	537			537	
0490 Other Current Liabilities	1,589			1,589	
Total Current Liabilities	\$167,265			\$167,265	
Noncurrent Liabilities					
0510 Bonds Payable					
0520 Extended-Term Financing Agreements Payable					
0530 Lease-Purchase Obligations					
0540 Accumulated Compensated Absences	24,499			24,499	
0550 Authority Lease Obligations					
0560 Other Post-Employment Benefits (OPEB)	266,955			266,955	
0570 Net Pension Liability	1,730,057			1,730,057	
0599 Other Noncurrent Liabilities					
Total Noncurrent Liabilities	\$2,021,511			\$2,021,511	
Total Liabilities	\$2,188,776			\$2,188,776	
0950 Deferred Inflows of Resources	116,406			116,406	
Net Position					
0791 Net Investment in Capital Assets					
0008 Restricted Net Position (0792 – 0798)					131,000
0799 Unrestricted Net Position	(572,242)			(572,242)	3,638,002
Total Net Position	(\$572,242)			(\$572,242)	\$3,769,002
Total Liabilities And Deferred Inflows Of Resources And Net Position	\$1,732,940			\$1,732,940	\$3,769,002

Amounts Expressed in Whole Dollars	Food Service (51)	Child Care Operations (52)	Other Enterprise (58)	TOTAL	Internal Service (60)
Operating Revenues					
6600 Food Service Revenue	88,068			88,068	
0071 Charges for Services					5,952,345
0072 Other Operating Revenue	7,450			7,450	
Total Operating Revenues	\$95,518			\$95,518	\$5,952,345
Operating Expenses					
100 Personnel Services – Salaries	571,233			571,233	
200 Personnel Services – Employee Benefits	384,221			384,221	5,905,445
300 Purchased Professional and Technical Services					
400 Purchased Property Services	11,814			11,814	
500 Other Purchased Services	679			679	
600 Supplies	1,058,740			1,058,740	
740 Depreciation	7,207			7,207	
810 Dues and Fees	1,269			1,269	229,804
890 Miscellaneous Expenditures	14,272			14,272	
Total Operating Expenses	\$2,049,435			\$2,049,435	\$6,135,249
Operating Income (Loss)	(\$1,953,917)			(\$1,953,917)	(\$182,904)
Non Operating Revenues (Expenses)					
6500 Earnings on Investments	17,832			17,832	49,017
6920 Contributions and Donations from Private Sources					
6930 Gains or Losses on Sale of Fixed Assets					
6991 Refunds of a Prior Year Expenditure					
7000 Revenue from State Sources	188,485			188,485	
8000 Revenue from Federal Sources	2,033,544			2,033,544	
9990 Insurance Recoveries					
820 Claims and Judgments Against the LEA					
830 Interest					
TOTAL Non Operating Revenues (Expenses)	\$2,239,861			\$2,239,861	\$49,017
Income (Loss) Before Contributions And Transfers	\$285,944			\$285,944	(\$133,887)

Amounts Expressed in Whole Dollars	<u>Food Service</u> <u>(51)</u>	<u>Child Care Operations</u> <u>(52)</u>	<u>Other Enterprise</u> <u>(58)</u>	<u>TOTAL</u>	<u>Internal Service</u> <u>(60)</u>
Contributions, Transfers, and Special and Extraordinary Items					
5200 Interfund Transfers – Out					
5300 Transfers Out to Component Units/Primary Governments					
5520 Special Items – Losses					
5530 Extraordinary Items – Losses					
9300 Interfund Transfers - IN					
9500 Capital Contributions					
9700 Transfers IN From Component Units/Primary Governments					
9920 Special Items – Gains					
9930 Extraordinary Items – Gains					
Change In Net Position	\$285,944			\$285,944	(\$133,887)
0002 Net Position - Beginning of Fiscal Year	(729,154)			(729,154)	3,902,889
0003 Accounting Changes / Residual Equity Transfers					
Net Position - End Of Year	(\$443,210)			(\$443,210)	\$3,769,002

LEA : 123466403 Pottstown SD

Printed 2/6/2020 1:13:27 PM

Amounts Expressed in Whole Dollars	<u>Food Service</u> <u>(51)</u>	<u>Child Care Operations</u> <u>(52)</u>	<u>Other Enterprise</u> <u>(58)</u>	<u>TOTAL</u>	<u>Internal Service(60)</u>
Cash Flows From Operating Activities					
0011 Cash Receipts From Users	118,092			118,092	5,735,333
0012 Cash Receipts From Assessments Made to Other Funds					
0013 Cash Receipts From Earnings on Investments					
0014 Cash Receipts From Other Operating Revenue					
0015 Cash Payments To Employees For Services	821,746			821,746	
0016 Cash Payments For Insurance Claims					5,784,350
0017 Cash Payments To Suppliers For Goods and Services	983,837			983,837	
0018 Cash Payments For Other Operating Expenses					
Net Cash Provided By (Used For) Operating Activities	(\$1,687,491)			(\$1,687,491)	(\$49,017)
Cash Flows From Non-Capital Financing Activities					
0021 Receipts From Local Sources - 6000					
0022 Receipts From State Sources - 7000	188,730			188,730	
0023 Receipts From Federal Sources -8000	1,930,151			1,930,151	
0024 Notes and Loans Received (Repaid)					
0025 Interest Paid on Notes/Loans - 5100-830					
0026 Operating Transfers In (Out)/Residual Equity Trans					
0027 Operating Transfers In (Out) Primary Government / Comp Unit					
0028 Receipts From Refund of Prior Year Expenditures - 6991					
0029 Special and Extraordinary Gains (losses)					
0030 Receipts from Insurance Recoveries -9990					
Net Cash Prov By (Used for) Non-Capital Financing Activities	\$2,118,881			\$2,118,881	
Cash Flows From Capital and Related Financing Activities					
0031 Payments For Fac Acq, Const, and Imp - 4000	(62,875)			(62,875)	
0032 Gain / (Loss) on Sale of Fixed Assets - 6930					
0033 Proceeds From Extended Term Financing - 9200					
0034 Principal Paid on Financing Agreements					
0035 Interest Paid on Financing Agreements - 5100-830					
0036 (Inc) Dec in Contributed Capital					
Net Cash Prov By (Used for) Capital and Related Financing Activities	(\$62,875)			(\$62,875)	
Cash Flows From Investing Activities					
0041 Earnings on Investments - 6500	17,832			17,832	49,017
0042 Purchase of Inv Securities / Deposits to Inv Pools					
0043 Receipts From Investment Pool Withdrawals					
0044 Proceeds from Sale and Maturity of Inv Securities					

LEA : 123466403 Pottstown SD

Printed 2/6/2020 1:13:27 PM

0045 Loans Received (Paid)				
Net Cash Prov By (Used for) Investing Activities	\$17,832		\$17,832	\$49,017

LEA : 123466403 Pottstown SD

Printed 2/6/2020 1:13:27 PM

	Food Service (51)	Child Care Operations (52)	Other Enterprise (58)	TOTAL	Internal Service (60)
Net Increase (Decrease) in Cash Flows	386,347			386,347	
0004 Cash and Cash Equivalents Beginning of Year	754,745			754,745	
Cash and Cash Equivalents at Year End	\$1,141,092			\$1,141,092	
Reconciliation of Operating Income (Loss) To Net Cash Provided by (Used For) Operating Activities					
0005 Operating Income (Loss) per REP	(1,953,917)			(1,953,917)	(182,904)
Adjustments					
0051 Depreciation and Net Amortization	7,207			7,207	
0052 Provision for Uncollectible Accounts					
0053 Other Adjustments	108,166			108,166	
Effect of Changes in Assets, Liabilities, Deferred Outflows and Deferred Inflows					
0054 (Inc) Dec In Accounts Receivable (0120-0150)	(27)			(27)	172,966
0055 Advances to Other Funds (0160)	165,805			165,805	
0056 (Inc) Dec in Inventories (0170)	630			630	
0057 (Inc) Dec in Prepaid Expenses (0180)					
0058 (Inc) Dec in Other Current or Noncurrent Assets					(60,079)
0064 Deferred Outflows (0910)	(88,819)			(88,819)	
0059 Inc (Dec) in Accounts Payable (0400-0450)	(5,479)			(5,479)	
0060 Inc (Dec) in Accrued Salaries/Benefits (0461)	7,699			7,699	
0065 Inc (Dec) in Net Pension Liabilities (0570)	(96,651)			(96,651)	
0066 Inc (Dec) in Other Postemp Benefit Oblig (0560)	115,578			115,578	
0061 Inc (Dec) in Payroll Deductions/Withholding (0462)					
0062 Inc (Dec) in Unearned Revenue (0480)	(861)			(861)	
0063 Inc (Dec) in Other Current or Noncurrent Liabilities	182			182	21,000
0067 Deferred Inflows (0950)	52,996			52,996	
Total Adjustments	\$266,426			\$266,426	\$133,887
Cash Provided By (Used for) Total	(\$1,687,491)			(\$1,687,491)	(\$49,017)

COMBINED STATEMENT OF CASH FLOWS
SCHEDULE OF NONCASH INVESTING, CAPITAL, AND FINANCING ACTIVITIES

Explanation of Transaction and Balance Sheet Effect	Amount
Total	

LEA : 123466403 Pottstown SD

Printed 2/6/2020 1:13:29 PM

Amounts Expressed in Whole Dollars	<u>Private Purpose Trust</u> <u>(71)</u>	<u>Investment Trust</u> <u>(72)</u>	<u>Pension Trust</u> <u>(73)</u>	<u>Activity</u> <u>(81)</u>
Assets And Deferred Outflows Of Resources				
Assets				
0100 Cash and Cash Equivalents	81,634			
0110 Investments				
0130 Due From Other Funds				
0147 Due from Component Unit				
0150 Other Receivables				
0170 Inventories				
0180 Prepaid Expenses (Expenditures)				
0190 Other Current Assets				
0220 Buildings and Building Improvements (Net)				
0230 Machinery, Equipment and Furniture (Net)				
Total Assets	\$81,634			
0910 Deferred Outflows of Resources				
Total Assets And Deferred Outflows Of Resources	\$81,634			

LEA : 123466403 Pottstown SD

Printed 2/6/2020 1:13:29 PM

Amounts Expressed in Whole Dollars		<u>Other Agency</u> <u>(89)</u>	<u>Discrete Component Units</u> <u>(98)</u>	<u>Discrete Component Units</u> <u>(99)</u>	<u>Total Fiduciary Funds</u>
Assets And Deferred Outflows Of Resources					
Assets					
0100	Cash and Cash Equivalents				81,634
0110	Investments				
0130	Due From Other Funds				
0147	Due from Component Unit				
0150	Other Receivables				
0170	Inventories				
0180	Prepaid Expenses (Expenditures)				
0190	Other Current Assets				
0220	Buildings and Building Improvements (Net)				
0230	Machinery, Equipment and Furniture (Net)				
Total Assets					\$81,634
0910	Deferred Outflows of Resources				
Total Assets And Deferred Outflows Of Resources					\$81,634

LEA : 123466403 Pottstown SD

Printed 2/6/2020 1:13:29 PM

Amounts Expressed in Whole Dollars	<u>Private Purpose Trust</u> <u>(71)</u>	<u>Investment Trust</u> <u>(72)</u>	<u>Pension Trust</u> <u>(73)</u>	<u>Activity</u> <u>(81)</u>
Liabilities, Deferred Inflows Of Resources And Net Position				
Liabilities				
0400 Due to Other Funds				
0411 Due to Other Governments				
0412 Due to Primary Government				
0413 Due to Component Unit				
0420 Accounts Payable				
0430 Contracts Payable				
0450 Short-Term Payables				
0461 Accrued Salaries and Benefits				
0462 Payroll Deductions and Withholding				
0480 Unearned Revenues				
0490 Other Current Liabilities				
Total Liabilities				
0950 Deferred Inflows of Resources				
Net Position				
0791 Net Investment in Capital Assets				
0009 Restricted Net Position (0792 – 0798)	81,634			
0799 Unrestricted Net Position				
Total Net Position	\$81,634			
Total Liabilities, Deferred Inflows Of Resources And Net Position	\$81,634			

LEA : 123466403 Pottstown SD

Printed 2/6/2020 1:13:29 PM

Amounts Expressed in Whole Dollars		<u>Other Agency</u> <u>(89)</u>	<u>Discrete Component Units</u> <u>(98)</u>	<u>Discrete Component Units</u> <u>(99)</u>	<u>Total Fiduciary Funds</u>
Liabilities, Deferred Inflows Of Resources And Net Position					
Liabilities					
0400	Due to Other Funds				
0411	Due to Other Governments				
0412	Due to Primary Government				
0413	Due to Component Unit				
0420	Accounts Payable				
0430	Contracts Payable				
0450	Short-Term Payables				
0461	Accrued Salaries and Benefits				
0462	Payroll Deductions and Withholding				
0480	Unearned Revenues				
0490	Other Current Liabilities				
Total Liabilities					
0950	Deferred Inflows of Resources				
Net Position					
0791	Net Investment in Capital Assets				
0009	Restricted Net Position (0792 – 0798)				81,634
0799	Unrestricted Net Position				
Total Net Position					\$81,634
Total Liabilities, Deferred Inflows Of Resources And Net Position					\$81,634

LEA : 123466403 Pottstown SD

Printed 2/6/2020 1:13:31 PM

Amounts Expressed in Whole Dollars	<u>Private Purpose Trust</u> <u>(71)</u>	<u>Investment Trust</u> <u>(72)</u>	<u>Pension Trust</u> <u>(73)</u>	<u>Discrete Component</u> <u>Units</u> <u>(98)</u>	<u>Discrete Component</u> <u>Units</u> <u>(99)</u>	<u>Total Fiduciary</u> <u>Funds</u>
Additions						
0091 Gifts and Contributions	41,105					41,105
0092 Other Additions	1,967					1,967
Deductions						
0093 Scholarships Awarded						
0094 Other Deductions	54,363					54,363
Change In Net Position	(\$11,291)					(\$11,291)
0006 Net Position – Beginning of Fiscal Year	92,925					92,925
0007 Net Position Held in Trust for Pension Benefits						
Net Position - End of Fiscal Year	\$81,634					\$81,634

LEA : 123466403 Pottstown SD

General Fund (10)

Printed 2/6/2020 1:13:33 PM

Page - 1 of 4

	Revenue Reported In Current Year	Current Year Tax Accrual	Prior Year Tax Accrual	Taxes Collected In Current Year
Revenue from Local Sources				
6111 Current Real Estate Taxes	28,188,038.38			28,188,038.38
6112 Interim Real Estate Taxes	19,119.76			19,119.76
6113 Public Utility Realty Taxes	33,525.18			33,525.18
6114 Payments in Lieu of Current Taxes - State / Local	41,537.97			41,537.97
6120 Current Per Capita Taxes, Section 679	31,213.76			31,213.76
6141 Current Act 511 Per Capita Taxes	31,213.75			31,213.75
6143 Current Act 511 Local Services Taxes	42,419.22			42,419.22
6151 Current Act 511 Earned Income Taxes	2,264,944.67			2,264,944.67
6152 Current Act 511 Occupation Taxes	158,126.46			158,126.46
6153 Current Act 511 Real Estate Transfer Taxes	434,709.63	79,779.68	36,491.44	391,421.39
6411 Delinquent Real Estate Taxes	1,287,768.94			1,287,768.94
6420 Delinquent Per Capita Taxes, Section 679	27,953.21			27,953.21
6440 Delinquent Local Enabling Taxes - Flat Rate Assessments	27,953.21			27,953.21
6452 Delinquent Act 511 Occupation Taxes	195,439.96			195,439.96
6500 Earnings on Investments	514,722.73			
6700 Revenues from LEA Activities	23,870.80			
6821 State Revenue Received from Other Pennsylvania Public LEAs	4,000.00			
6832 Federal IDEA Revenue Received as Pass Through	659,840.51			
6839 Federal Revenue Received from Other Sources	1,082.06			
6910 Rentals	381,135.53			
6920 Contributions and Donations from Private Sources	123,123.72			
6941 Regular Day School Tuition	41,499.80			
6961 Transportation Services Provided Other Pennsylvania LEAs	37,556.01			
6991 Refunds of a Prior Year Expenditure	26,726.35			
6999 Other Revenues Not Specified Above	390,412.55			
TOTAL Revenue from Local Sources	\$34,987,934.16	\$79,779.68	\$36,491.44	\$32,740,675.86

	Revenue Reported In Current Year			
Revenue from State Sources				
7110 Basic Education Funding	11,445,947.20			
7160 Tuition for Orphans Subsidy	92,700.19			
7170 School Improvement Grants	1,000,000.00			
7220 Vocational Education	353,712.22			
7271 Special Education funds for School-Aged Pupils	2,232,033.67			
7292 Pre-K Counts	2,397,000.00			
7311 Pupil Transportation Subsidy	561,940.81			
7312 Nonpublic and Charter School Pupil Transportation Subsidy	20,790.00			
7320 Rental and Sinking Fund Payments / Building Reimbursement Subsidy	784,106.82			
7330 Health Services (Medical, Dental, Nurse, Act 25)	57,751.01			
7340 State Property Tax Reduction Allocation	1,622,645.58			
7361 School Safety and Security Grants	25,000.00			
7505 Ready to Learn Block Grant	559,007.00			
7509 Supplemental Equipment Grants	36,044.73			
7599 Other State Revenue Not Listed Elsewhere in the 7000 Series	1,810.99			
7810 State Share of Social Security and Medicare Taxes	1,022,677.33			
7820 State Share of Retirement Contributions	5,235,298.92			
TOTAL Revenue from State Sources	\$27,448,466.47			

	Revenue Reported In Current Year			
<u>Revenue from Federal Sources</u>				
8390 Other Restricted Federal Grants-in-Aid Directly from the Federal Government	43,321.00			
8514 NCLB, Title I - Improving the Academic Achievement of the Disadvantaged	1,387,008.09			
8515 NCLB, Title II - Preparing, Training and Recruiting High Quality Teachers and Principals	179,455.00			
8517 NCLB, Title IV - 21St Century Schools	418,792.10			
8521 Vocational Education - Operating Expenditures	63,751.00			
8810 School-Based Access Medicaid Reimbursement Program (SBAP) Reimbursements (Access)	500,000.00			
8820 Medical Assistance Reimbursement for Administrative Claiming (Quarterly) Program	22,193.26			
TOTAL Revenue from Federal Sources	\$2,614,520.45			

Revenue Reported				
<u>In Current Year</u>				
<u>Other Financing Sources</u>				
9340 Debt Service Fund Transfers	2,506.63			
9400 Sale of or Compensation for Loss of Fixed Assets	138,556.25			
TOTAL Other Financing Sources	\$141,062.88			
TOTAL FROM ALL SOURCES	\$65,191,983.96	\$79,779.68	\$36,491.44	\$32,740,675.86

Revenue from Local Sources	34,987,934.16
Revenue from State Sources	27,448,466.47
Revenue from Federal Sources	2,614,520.45
Other Financing Sources	141,062.88
TOTAL FROM ALL SOURCES	\$65,191,983.96

LEA : 123466403 Pottstown SD

Printed 2/6/2020 1:13:38 PM

General Fund (10)

1000 Instruction		Total
100 <u>Personnel Services – Salaries</u>		
100 Personnel Services – Salaries		16,491,847.22
Total Personnel Services – Salaries		\$16,491,847.22
200 <u>Personnel Services – Employee Benefits</u>		
210 Group Insurance – Contracted Provider		3,599,892.15
220 Social Security Contributions		1,224,785.16
230 PSERS Retirement Contributions		5,456,687.94
250 Unemployment Compensation		24,534.88
260 Workers' Compensation		182,263.83
Total Personnel Services – Employee Benefits		\$10,488,163.96
300 <u>Purchased Professional and Technical Services</u>		
310 Official / Administrative Services		435.00
322 Professional Educational Services – Ius		1,215,469.36
323 Professional Educational Services – Other Educational Agencies		5,223.38
329 Professional Educational Services – Other		1,204,400.74
330 Other Professional Services		255,177.00
390 Other Purchased Professional and Technical Services		416,520.77
Total Purchased Professional and Technical Services		\$3,097,226.25
400 <u>Purchased Property Services</u>		
410 Cleaning Services		1,804.30
430 Repairs and Maintenance Services		80,149.67
440 Rentals		99,000.00
Total Purchased Property Services		\$180,953.97
500 <u>Other Purchased Services</u>		
510 Student Transportation Services		2,399.40
530 Communications		9,973.39
550 Printing and Binding		803.56
561 Tuition To Other School Districts Within the State		377,306.36
562 Tuition To Pennsylvania Charter Schools		3,238,353.56
563 Tuition To Nonpublic Schools		3,204,126.08
567 Tuition To Approved Private Schools (APS) and PA Chartered Schools for the Deaf and Blind		569,272.15
568 Tuition To Private Residential Rehabilitative Institutions (PRRI) [In-State] and Detention Centers		130,245.26
580 Travel		26,443.57
594 IU Payment By Withholding for Institutionalized Children's Programs – Special Classes		473.47
Total Other Purchased Services		\$7,559,396.80
600 <u>Supplies</u>		
610 General Supplies		536,339.21
630 Food		254.57
640 Books and Periodicals		232,974.81
650 Supplies & Fees – Technology Related		276,124.00
Total Supplies		\$1,045,692.59
700 <u>Property</u>		
752 Capital Equipment – Original and Additional		55,679.32

LEA : 123466403 Pottstown SD

Printed 2/6/2020 1:13:38 PM

General Fund (10)		
1000 Instruction		<u>Total</u>
700 <u>Property</u>		
790 Other Property		11,079.19
Total Property		\$66,758.51
800 <u>Other Objects</u>		
810 Dues and Fees		170.00
890 Miscellaneous Expenditures		1,037,402.37
Total Other Objects		\$1,037,572.37
Total 1000 Instruction		\$39,967,611.67

LEA : 123466403 Pottstown SD

Printed 2/6/2020 1:13:38 PM

General Fund (10)				
1100 Regular Programs – Elementary / Secondary	<u>Elementary</u>	<u>Secondary</u>	<u>Federal</u>	<u>Total</u>
100 <u>Personnel Services – Salaries</u>				
100 Personnel Services – Salaries	5,792,321.33	3,861,547.55	935,239.63	10,589,108.51
Total Personnel Services – Salaries	\$5,792,321.33	\$3,861,547.55	\$935,239.63	\$10,589,108.51
200 <u>Personnel Services – Employee Benefits</u>				
210 Group Insurance – Contracted Provider	1,012,216.85	674,811.24	265,332.32	1,952,360.41
220 Social Security Contributions	424,443.52	282,962.35	67,750.12	775,155.99
230 PSERS Retirement Contributions	2,044,398.14	1,362,932.10	121,961.09	3,529,291.33
250 Unemployment Compensation	14,720.93	9,813.95		24,534.88
260 Workers' Compensation	103,993.33	69,328.88	234.51	173,556.72
Total Personnel Services – Employee Benefits	\$3,599,772.77	\$2,399,848.52	\$455,278.04	\$6,454,899.33
300 <u>Purchased Professional and Technical Services</u>				
329 Professional Educational Services – Other	285,413.18	190,275.46	16,811.90	492,500.54
390 Other Purchased Professional and Technical Services	30,852.90	20,568.60		51,421.50
Total Purchased Professional and Technical Services	\$316,266.08	\$210,844.06	\$16,811.90	\$543,922.04
400 <u>Purchased Property Services</u>				
430 Repairs and Maintenance Services	1,052.42	701.61		1,754.03
Total Purchased Property Services	\$1,052.42	\$701.61		\$1,754.03
500 <u>Other Purchased Services</u>				
510 Student Transportation Services	992.66	661.77		1,654.43
561 Tuition To Other School Districts Within the State	3,807.05	2,538.03		6,345.08
562 Tuition To Pennsylvania Charter Schools	1,113,348.42	742,232.28		1,855,580.70
580 Travel	1,697.27	1,131.52	338.73	3,167.52
Total Other Purchased Services	\$1,119,845.40	\$746,563.60	\$338.73	\$1,866,747.73
600 <u>Supplies</u>				
610 General Supplies	66,679.70	44,453.14	85,543.75	196,676.59
640 Books and Periodicals	126,546.53	84,364.35		210,910.88
Total Supplies	\$193,226.23	\$128,817.49	\$85,543.75	\$407,587.47
700 <u>Property</u>				
790 Other Property	1,176.56	784.37		1,960.93
Total Property	\$1,176.56	\$784.37		\$1,960.93
800 <u>Other Objects</u>				
890 Miscellaneous Expenditures	841.49	561.00		1,402.49
Total Other Objects	\$841.49	\$561.00		\$1,402.49
Total 1100 Regular Programs – Elementary / Secondary	\$11,024,502.28	\$7,349,668.20	\$1,493,212.05	\$19,867,382.53

LEA : 123466403 Pottstown SD

Printed 2/6/2020 1:13:38 PM

General Fund (10)				
1110 Regular Programs	<u>Elementary</u>	<u>Secondary</u>	<u>Federal</u>	<u>Total</u>
100 <u>Personnel Services – Salaries</u>				
100 Personnel Services – Salaries	5,792,321.33	3,861,547.55	935,239.63	10,589,108.51
Total Personnel Services – Salaries	\$5,792,321.33	\$3,861,547.55	\$935,239.63	\$10,589,108.51
200 <u>Personnel Services – Employee Benefits</u>				
210 Group Insurance – Contracted Provider	1,012,216.85	674,811.24	265,332.32	1,952,360.41
220 Social Security Contributions	424,443.52	282,962.35	67,750.12	775,155.99
230 PSERS Retirement Contributions	2,044,398.14	1,362,932.10	121,961.09	3,529,291.33
250 Unemployment Compensation	14,720.93	9,813.95		24,534.88
260 Workers' Compensation	103,993.33	69,328.88	234.51	173,556.72
Total Personnel Services – Employee Benefits	\$3,599,772.77	\$2,399,848.52	\$455,278.04	\$6,454,899.33
300 <u>Purchased Professional and Technical Services</u>				
329 Professional Educational Services – Other	285,413.18	190,275.46	16,811.90	492,500.54
390 Other Purchased Professional and Technical Services	30,852.90	20,568.60		51,421.50
Total Purchased Professional and Technical Services	\$316,266.08	\$210,844.06	\$16,811.90	\$543,922.04
400 <u>Purchased Property Services</u>				
430 Repairs and Maintenance Services	1,052.42	701.61		1,754.03
Total Purchased Property Services	\$1,052.42	\$701.61		\$1,754.03
500 <u>Other Purchased Services</u>				
510 Student Transportation Services	992.66	661.77		1,654.43
561 Tuition To Other School Districts Within the State	3,807.05	2,538.03		6,345.08
562 Tuition To Pennsylvania Charter Schools	1,113,348.42	742,232.28		1,855,580.70
580 Travel	1,697.27	1,131.52	338.73	3,167.52
Total Other Purchased Services	\$1,119,845.40	\$746,563.60	\$338.73	\$1,866,747.73
600 <u>Supplies</u>				
610 General Supplies	66,679.70	44,453.14	85,543.75	196,676.59
640 Books and Periodicals	126,546.53	84,364.35		210,910.88
Total Supplies	\$193,226.23	\$128,817.49	\$85,543.75	\$407,587.47
700 <u>Property</u>				
790 Other Property	1,176.56	784.37		1,960.93
Total Property	\$1,176.56	\$784.37		\$1,960.93
800 <u>Other Objects</u>				
890 Miscellaneous Expenditures	841.49	561.00		1,402.49
Total Other Objects	\$841.49	\$561.00		\$1,402.49
Total 1110 Regular Programs	\$11,024,502.28	\$7,349,668.20	\$1,493,212.05	\$19,867,382.53

LEA : 123466403 Pottstown SD

Printed 2/6/2020 1:13:38 PM

General Fund (10)

1200 Special Programs – Elementary / Secondary	Elementary	Secondary	Federal	Total
100 Personnel Services – Salaries				
100 Personnel Services – Salaries	2,153,848.61	1,435,899.08	369,422.55	3,959,170.24
Total Personnel Services – Salaries	\$2,153,848.61	\$1,435,899.08	\$369,422.55	\$3,959,170.24
200 Personnel Services – Employee Benefits				
210 Group Insurance – Contracted Provider	695,819.97	463,879.96	63,323.53	1,223,023.46
220 Social Security Contributions	156,437.58	104,291.73	27,109.46	287,838.77
230 PSERS Retirement Contributions	772,952.68	515,301.79	16,251.42	1,304,505.89
260 Workers' Compensation	1,068.51	712.33		1,780.84
Total Personnel Services – Employee Benefits	\$1,626,278.74	\$1,084,185.81	\$106,684.41	\$2,817,148.96
300 Purchased Professional and Technical Services				
322 Professional Educational Services – Ius	735,656.56	479,718.54		1,215,375.10
329 Professional Educational Services – Other	164,932.48	109,954.99	276,390.21	551,277.68
330 Other Professional Services	153,106.20	102,070.80		255,177.00
390 Other Purchased Professional and Technical Services	42,854.42	28,569.61		71,424.03
Total Purchased Professional and Technical Services	\$1,096,549.66	\$720,313.94	\$276,390.21	\$2,093,253.81
500 Other Purchased Services				
530 Communications	1,890.43	1,260.28		3,150.71
561 Tuition To Other School Districts Within the State	32,805.37	21,870.25		54,675.62
562 Tuition To Pennsylvania Charter Schools	829,663.72	553,109.14		1,382,772.86
563 Tuition To Nonpublic Schools	1,609,720.56	1,073,147.03		2,682,867.59
567 Tuition To Approved Private Schools (APS) and PA Chartered Schools for the Deaf and Blind	341,563.29	227,708.86		569,272.15
568 Tuition To Private Residential Rehabilitative Institutions (PRRI) [In-State] and Detention Centers	34,185.59	22,790.40		56,975.99
580 Travel	990.04	660.02		1,650.06
594 IU Payment By Withholding for Institutionalized Children's Programs – Special Classes	284.08	189.39		473.47
Total Other Purchased Services	\$2,851,103.08	\$1,900,735.37		\$4,751,838.45
600 Supplies				
610 General Supplies	37,863.96	25,242.63	19,319.83	82,426.42
640 Books and Periodicals	13,238.35	8,825.58		22,063.93
Total Supplies	\$51,102.31	\$34,068.21	\$19,319.83	\$104,490.35
Total 1200 Special Programs – Elementary / Secondary	\$7,778,882.40	\$5,175,202.41	\$771,817.00	\$13,725,901.81

LEA : 123466403 Pottstown SD

Printed 2/6/2020 1:13:38 PM

General Fund (10)				
1210 Life Skills Support	<u>Elementary</u>	<u>Secondary</u>	<u>Federal</u>	<u>Total</u>
100 <u>Personnel Services – Salaries</u>				
100 Personnel Services – Salaries	325,920.53	217,280.36	179,978.08	723,178.97
Total Personnel Services – Salaries	\$325,920.53	\$217,280.36	\$179,978.08	\$723,178.97
200 <u>Personnel Services – Employee Benefits</u>				
210 Group Insurance – Contracted Provider	105,778.75	70,519.16	37,775.20	214,073.11
220 Social Security Contributions	23,862.52	15,908.35	13,150.57	52,921.44
230 PSERS Retirement Contributions	133,720.12	89,146.74	16,251.42	239,118.28
Total Personnel Services – Employee Benefits	\$263,361.39	\$175,574.25	\$67,177.19	\$506,112.83
300 <u>Purchased Professional and Technical Services</u>				
322 Professional Educational Services – Ius	74,531.90	49,687.93		124,219.83
329 Professional Educational Services – Other	34,483.59	22,989.06	276,390.21	333,862.86
330 Other Professional Services	140,498.29	93,665.53		234,163.82
390 Other Purchased Professional and Technical Services	42,854.42	28,569.61		71,424.03
Total Purchased Professional and Technical Services	\$292,368.20	\$194,912.13	\$276,390.21	\$763,670.54
500 <u>Other Purchased Services</u>				
530 Communications	1,890.43	1,260.28		3,150.71
561 Tuition To Other School Districts Within the State	20,788.27	13,858.85		34,647.12
563 Tuition To Nonpublic Schools	10,989.00	7,326.00		18,315.00
568 Tuition To Private Residential Rehabilitative Institutions (PRRI) [In-State] and Detention Centers	34,185.59	22,790.40		56,975.99
580 Travel	445.77	297.18		742.95
Total Other Purchased Services	\$68,299.06	\$45,532.71		\$113,831.77
600 <u>Supplies</u>				
610 General Supplies	8,498.83	5,665.89	16,518.35	30,683.07
Total Supplies	\$8,498.83	\$5,665.89	\$16,518.35	\$30,683.07
Total 1210 Life Skills Support	\$958,448.01	\$638,965.34	\$540,063.83	\$2,137,477.18

LEA : 123466403 Pottstown SD

Printed 2/6/2020 1:13:38 PM

General Fund (10)				
1220 Sensory Support	<u>Elementary</u>	<u>Secondary</u>	<u>Federal</u>	<u>Total</u>
300 <u>Purchased Professional and Technical Services</u>				
322 Professional Educational Services – Ius	168,885.75	112,590.50		281,476.25
329 Professional Educational Services – Other	111,375.01	74,250.01		185,625.02
Total Purchased Professional and Technical Services	\$280,260.76	\$186,840.51		\$467,101.27
600 <u>Supplies</u>				
610 General Supplies	4,217.40	2,811.60		7,029.00
Total Supplies	\$4,217.40	\$2,811.60		\$7,029.00
Total 1220 Sensory Support	\$284,478.16	\$189,652.11		\$474,130.27

LEA : 123466403 Pottstown SD

Printed 2/6/2020 1:13:38 PM

General Fund (10)

1230 Emotional Support	Elementary	Secondary	Federal	Total
100 <u>Personnel Services – Salaries</u>				
100 Personnel Services – Salaries	389,906.95	259,937.96	83,745.40	733,590.31
Total Personnel Services – Salaries	\$389,906.95	\$259,937.96	\$83,745.40	\$733,590.31
200 <u>Personnel Services – Employee Benefits</u>				
210 Group Insurance – Contracted Provider	95,831.23	63,887.48	9,148.85	168,867.56
220 Social Security Contributions	28,602.77	19,068.52	6,182.06	53,853.35
230 PSERS Retirement Contributions	145,402.66	96,935.11		242,337.77
260 Workers' Compensation	1,004.77	669.84		1,674.61
Total Personnel Services – Employee Benefits	\$270,841.43	\$180,560.95	\$15,330.91	\$466,733.29
300 <u>Purchased Professional and Technical Services</u>				
322 Professional Educational Services – Ius	235,342.24	156,894.83		392,237.07
329 Professional Educational Services – Other	19,073.88	12,715.92		31,789.80
330 Other Professional Services	12,607.91	8,405.27		21,013.18
Total Purchased Professional and Technical Services	\$267,024.03	\$178,016.02		\$445,040.05
500 <u>Other Purchased Services</u>				
563 Tuition To Nonpublic Schools	1,437,729.89	958,486.59		2,396,216.48
580 Travel	174.20	116.13		290.33
Total Other Purchased Services	\$1,437,904.09	\$958,602.72		\$2,396,506.81
600 <u>Supplies</u>				
610 General Supplies	4,743.82	3,162.54		7,906.36
640 Books and Periodicals	81.98	54.66		136.64
Total Supplies	\$4,825.80	\$3,217.20		\$8,043.00
Total 1230 Emotional Support	\$2,370,502.30	\$1,580,334.85	\$99,076.31	\$4,049,913.46

LEA : 123466403 Pottstown SD

Printed 2/6/2020 1:13:38 PM

General Fund (10)

1240 Academic Support

	<u>Elementary</u>	<u>Secondary</u>	<u>Federal</u>	<u>Total</u>
100 <u>Personnel Services – Salaries</u>				
100 Personnel Services – Salaries	1,438,021.13	958,680.76	105,699.07	2,502,400.96
Total Personnel Services – Salaries	\$1,438,021.13	\$958,680.76	\$105,699.07	\$2,502,400.96
200 <u>Personnel Services – Employee Benefits</u>				
210 Group Insurance – Contracted Provider	494,209.99	329,473.32	16,399.48	840,082.79
220 Social Security Contributions	103,972.29	69,314.86	7,776.83	181,063.98
230 PSERS Retirement Contributions	493,829.90	329,219.94		823,049.84
260 Workers' Compensation	63.74	42.49		106.23
Total Personnel Services – Employee Benefits	\$1,092,075.92	\$728,050.61	\$24,176.31	\$1,844,302.84
300 <u>Purchased Professional and Technical Services</u>				
322 Professional Educational Services – Ius	60,858.64	40,572.43		101,431.07
Total Purchased Professional and Technical Services	\$60,858.64	\$40,572.43		\$101,431.07
500 <u>Other Purchased Services</u>				
561 Tuition To Other School Districts Within the State	12,017.10	8,011.40		20,028.50
563 Tuition To Nonpublic Schools	47,116.72	31,411.14		78,527.86
580 Travel	370.07	246.71		616.78
Total Other Purchased Services	\$59,503.89	\$39,669.25		\$99,173.14
600 <u>Supplies</u>				
610 General Supplies	19,978.68	13,319.12	2,801.48	36,099.28
640 Books and Periodicals	13,156.37	8,770.92		21,927.29
Total Supplies	\$33,135.05	\$22,090.04	\$2,801.48	\$58,026.57
Total 1240 Academic Support	\$2,683,594.63	\$1,789,063.09	\$132,676.86	\$4,605,334.58

LEA : 123466403 Pottstown SD

Printed 2/6/2020 1:13:38 PM

General Fund (10)

1241 Learning Support – Public	Elementary	Secondary	Federal	Total
100 <u>Personnel Services – Salaries</u>				
100 Personnel Services – Salaries	1,369,955.36	913,303.58	105,699.07	2,388,958.01
Total Personnel Services – Salaries	\$1,369,955.36	\$913,303.58	\$105,699.07	\$2,388,958.01
200 <u>Personnel Services – Employee Benefits</u>				
210 Group Insurance – Contracted Provider	484,023.26	322,682.17	16,399.48	823,104.91
220 Social Security Contributions	98,914.24	65,942.83	7,776.83	172,633.90
230 PSERS Retirement Contributions	473,218.35	315,478.90		788,697.25
260 Workers' Compensation	63.74	42.49		106.23
Total Personnel Services – Employee Benefits	\$1,056,219.59	\$704,146.39	\$24,176.31	\$1,784,542.29
300 <u>Purchased Professional and Technical Services</u>				
322 Professional Educational Services – Ius	60,858.64	40,572.43		101,431.07
Total Purchased Professional and Technical Services	\$60,858.64	\$40,572.43		\$101,431.07
500 <u>Other Purchased Services</u>				
561 Tuition To Other School Districts Within the State	12,017.10	8,011.40		20,028.50
563 Tuition To Nonpublic Schools	47,116.72	31,411.14		78,527.86
580 Travel	145.56	97.04		242.60
Total Other Purchased Services	\$59,279.38	\$39,519.58		\$98,798.96
600 <u>Supplies</u>				
610 General Supplies	19,593.77	13,062.51		32,656.28
640 Books and Periodicals	13,156.37	8,770.92		21,927.29
Total Supplies	\$32,750.14	\$21,833.43		\$54,583.57
Total 1241 Learning Support – Public	\$2,579,063.11	\$1,719,375.41	\$129,875.38	\$4,428,313.90

LEA : 123466403 Pottstown SD

Printed 2/6/2020 1:13:38 PM

General Fund (10)				
1243 Gifted Support	<u>Elementary</u>	<u>Secondary</u>	<u>Federal</u>	<u>Total</u>
100 <u>Personnel Services – Salaries</u>				
100 Personnel Services – Salaries	68,065.77	45,377.18		113,442.95
Total Personnel Services – Salaries	\$68,065.77	\$45,377.18		\$113,442.95
200 <u>Personnel Services – Employee Benefits</u>				
210 Group Insurance – Contracted Provider	10,186.73	6,791.15		16,977.88
220 Social Security Contributions	5,058.05	3,372.03		8,430.08
230 PSERS Retirement Contributions	20,611.55	13,741.04		34,352.59
Total Personnel Services – Employee Benefits	\$35,856.33	\$23,904.22		\$59,760.55
500 <u>Other Purchased Services</u>				
580 Travel	224.51	149.67		374.18
Total Other Purchased Services	\$224.51	\$149.67		\$374.18
600 <u>Supplies</u>				
610 General Supplies	384.91	256.61	2,801.48	3,443.00
Total Supplies	\$384.91	\$256.61	\$2,801.48	\$3,443.00
Total 1243 Gifted Support	\$104,531.52	\$69,687.68	\$2,801.48	\$177,020.68

LEA : 123466403 Pottstown SD

Printed 2/6/2020 1:13:38 PM

General Fund (10)

1270 Multi-Handicapped Support	<u>Elementary</u>	<u>Secondary</u>	<u>Federal</u>	<u>Total</u>
300 <u>Purchased Professional and Technical Services</u>				
322 Professional Educational Services – lus	179,959.28	119,972.85		299,932.13
Total Purchased Professional and Technical Services	\$179,959.28	\$119,972.85		\$299,932.13
500 <u>Other Purchased Services</u>				
563 Tuition To Nonpublic Schools	109,339.20	72,892.80		182,232.00
Total Other Purchased Services	\$109,339.20	\$72,892.80		\$182,232.00
600 <u>Supplies</u>				
610 General Supplies	425.23	283.48		708.71
Total Supplies	\$425.23	\$283.48		\$708.71
Total 1270 Multi-Handicapped Support	\$289,723.71	\$193,149.13		\$482,872.84

LEA : 123466403 Pottstown SD

Printed 2/6/2020 1:13:38 PM

General Fund (10)

1280 Early Intervention Support

	<u>Elementary</u>	<u>Secondary</u>	<u>Federal</u>	<u>Total</u>
300 <u>Purchased Professional and Technical Services</u>				
322 Professional Educational Services – lus	16,078.75			16,078.75
Total Purchased Professional and Technical Services	\$16,078.75			\$16,078.75
Total 1280 Early Intervention Support	\$16,078.75			\$16,078.75

LEA : 123466403 Pottstown SD

Printed 2/6/2020 1:13:38 PM

General Fund (10)

1290 Special Programs - Other Support	<u>Elementary</u>	<u>Secondary</u>	<u>Federal</u>	<u>Total</u>
500 <u>Other Purchased Services</u>				
562 Tuition To Pennsylvania Charter Schools	829,663.72	553,109.14		1,382,772.86
563 Tuition To Nonpublic Schools	4,545.75	3,030.50		7,576.25
567 Tuition To Approved Private Schools (APS) and PA Chartered Schools for the Deaf and Blind	341,563.29	227,708.86		569,272.15
594 IU Payment By Withholding for Institutionalized Children's Programs – Special Classes	284.08	189.39		473.47
Total Other Purchased Services	\$1,176,056.84	\$784,037.89		\$1,960,094.73
Total 1290 Special Programs - Other Support	\$1,176,056.84	\$784,037.89		\$1,960,094.73

LEA : 123466403 Pottstown SD

Printed 2/6/2020 1:13:38 PM

General Fund (10)				
1300 Vocational Education	<u>Elementary</u>	<u>Secondary</u>	<u>Federal</u>	<u>Total</u>
100 <u>Personnel Services – Salaries</u>				
100 Personnel Services – Salaries		598,822.35	1,102.00	599,924.35
Total Personnel Services – Salaries		\$598,822.35	\$1,102.00	\$599,924.35
200 <u>Personnel Services – Employee Benefits</u>				
210 Group Insurance – Contracted Provider		160,843.34		160,843.34
220 Social Security Contributions		43,359.79	84.30	43,444.09
230 PSERS Retirement Contributions		200,677.81	110.52	200,788.33
Total Personnel Services – Employee Benefits		\$404,880.94	\$194.82	\$405,075.76
300 <u>Purchased Professional and Technical Services</u>				
322 Professional Educational Services – Ius		94.26		94.26
Total Purchased Professional and Technical Services		\$94.26		\$94.26
400 <u>Purchased Property Services</u>				
430 Repairs and Maintenance Services		1,065.64		1,065.64
Total Purchased Property Services		\$1,065.64		\$1,065.64
500 <u>Other Purchased Services</u>				
561 Tuition To Other School Districts Within the State		24,367.21		24,367.21
580 Travel		3,000.00	2,924.83	5,924.83
Total Other Purchased Services		\$27,367.21	\$2,924.83	\$30,292.04
600 <u>Supplies</u>				
610 General Supplies		41,848.13	58,234.38	100,082.51
630 Food		254.57		254.57
Total Supplies		\$42,102.70	\$58,234.38	\$100,337.08
700 <u>Property</u>				
752 Capital Equipment – Original and Additional		55,679.32		55,679.32
Total Property		\$55,679.32		\$55,679.32
Total 1300 Vocational Education		\$1,130,012.42	\$62,456.03	\$1,192,468.45

LEA : 123466403 Pottstown SD

Printed 2/6/2020 1:13:38 PM

General Fund (10)

1400 Other Instructional Programs – Elementary / Secondary	Elementary	Secondary	Federal	Total
100 Personnel Services – Salaries				
100 Personnel Services – Salaries	244,014.34	162,676.22	267,488.79	674,179.35
Total Personnel Services – Salaries	\$244,014.34	\$162,676.22	\$267,488.79	\$674,179.35
200 Personnel Services – Employee Benefits				
210 Group Insurance – Contracted Provider	50,305.44	33,536.96	20,794.38	104,636.78
220 Social Security Contributions	25,357.48	16,904.98	26,990.21	69,252.67
230 PSERS Retirement Contributions	107,984.27	71,989.52	20,253.10	200,226.89
260 Workers' Compensation	195.63	130.42		326.05
Total Personnel Services – Employee Benefits	\$183,842.82	\$122,561.88	\$68,037.69	\$374,442.39
300 Purchased Professional and Technical Services				
323 Professional Educational Services – Other Educational Agencies	615.29	410.19		1,025.48
329 Professional Educational Services – Other	44,440.58	29,627.06		74,067.64
390 Other Purchased Professional and Technical Services			30,552.29	30,552.29
Total Purchased Professional and Technical Services	\$45,055.87	\$30,037.25	\$30,552.29	\$105,645.41
500 Other Purchased Services				
530 Communications	573.27	382.18	178.29	1,133.74
561 Tuition To Other School Districts Within the State	175,151.07	116,767.38		291,918.45
563 Tuition To Nonpublic Schools	312,755.10	208,503.39		521,258.49
568 Tuition To Private Residential Rehabilitative Institutions (PRRI) [In-State] and Detention Centers	43,961.56	29,307.71		73,269.27
580 Travel	2,280.05	1,520.04	8,688.70	12,488.79
Total Other Purchased Services	\$534,721.05	\$356,480.70	\$8,866.99	\$900,068.74
600 Supplies				
610 General Supplies	16,246.02	10,830.68	35,123.44	62,200.14
650 Supplies & Fees – Technology Related	165,674.40	110,449.60		276,124.00
Total Supplies	\$181,920.42	\$121,280.28	\$35,123.44	\$338,324.14
800 Other Objects				
810 Dues and Fees	102.00	68.00		170.00
Total Other Objects	\$102.00	\$68.00		\$170.00
Total 1400 Other Instructional Programs – Elementary / Secondary	\$1,189,656.50	\$793,104.33	\$410,069.20	\$2,392,830.03

LEA : 123466403 Pottstown SD

Printed 2/6/2020 1:13:38 PM

General Fund (10)				
1420 Summer School	<u>Elementary</u>	<u>Secondary</u>	<u>Federal</u>	<u>Total</u>
100 <u>Personnel Services – Salaries</u>				
100 Personnel Services – Salaries			75,034.19	75,034.19
Total Personnel Services – Salaries			\$75,034.19	\$75,034.19
200 <u>Personnel Services – Employee Benefits</u>				
210 Group Insurance – Contracted Provider			5,729.97	5,729.97
220 Social Security Contributions	7,326.18	4,884.12	12,869.09	25,079.39
Total Personnel Services – Employee Benefits	\$7,326.18	\$4,884.12	\$18,599.06	\$30,809.36
500 <u>Other Purchased Services</u>				
580 Travel			57.23	57.23
Total Other Purchased Services			\$57.23	\$57.23
600 <u>Supplies</u>				
610 General Supplies			238.43	238.43
Total Supplies			\$238.43	\$238.43
Total 1420 Summer School	\$7,326.18	\$4,884.12	\$93,928.91	\$106,139.21

LEA : 123466403 Pottstown SD

Printed 2/6/2020 1:13:38 PM

General Fund (10)				
1430 Homebound Instruction	<u>Elementary</u>	<u>Secondary</u>	<u>Federal</u>	<u>Total</u>
100 <u>Personnel Services – Salaries</u>				
100 Personnel Services – Salaries	3,079.80	2,053.20		5,133.00
Total Personnel Services – Salaries	\$3,079.80	\$2,053.20		\$5,133.00
200 <u>Personnel Services – Employee Benefits</u>				
220 Social Security Contributions	219.37	146.24		365.61
230 PSERS Retirement Contributions	1,029.58	686.39		1,715.97
Total Personnel Services – Employee Benefits	\$1,248.95	\$832.63		\$2,081.58
300 <u>Purchased Professional and Technical Services</u>				
323 Professional Educational Services – Other Educational Agencies	615.29	410.19		1,025.48
Total Purchased Professional and Technical Services	\$615.29	\$410.19		\$1,025.48
500 <u>Other Purchased Services</u>				
561 Tuition To Other School Districts Within the State	21,016.52	14,011.01		35,027.53
563 Tuition To Nonpublic Schools	17,496.34	11,664.23		29,160.57
Total Other Purchased Services	\$38,512.86	\$25,675.24		\$64,188.10
Total 1430 Homebound Instruction	\$43,456.90	\$28,971.26		\$72,428.16

LEA : 123466403 Pottstown SD

Printed 2/6/2020 1:13:38 PM

General Fund (10)

1440 Alternative Regular Education Programs	Elementary	Secondary	Federal	Total
100 Personnel Services – Salaries				
100 Personnel Services – Salaries	240,934.54	160,623.02		401,557.56
Total Personnel Services – Salaries	\$240,934.54	\$160,623.02		\$401,557.56
200 Personnel Services – Employee Benefits				
210 Group Insurance – Contracted Provider	50,305.44	33,536.96		83,842.40
220 Social Security Contributions	17,811.93	11,874.62		29,686.55
230 PSERS Retirement Contributions	80,511.17	53,674.12		134,185.29
260 Workers' Compensation	195.63	130.42		326.05
Total Personnel Services – Employee Benefits	\$148,824.17	\$99,216.12		\$248,040.29
300 Purchased Professional and Technical Services				
329 Professional Educational Services – Other	44,440.58	29,627.06		74,067.64
Total Purchased Professional and Technical Services	\$44,440.58	\$29,627.06		\$74,067.64
500 Other Purchased Services				
530 Communications	573.27	382.18		955.45
561 Tuition To Other School Districts Within the State	154,134.55	102,756.37		256,890.92
563 Tuition To Nonpublic Schools	295,258.76	196,839.16		492,097.92
568 Tuition To Private Residential Rehabilitative Institutions (PRRI) [In-State] and Detention Centers	43,961.56	29,307.71		73,269.27
580 Travel	2,280.05	1,520.04		3,800.09
Total Other Purchased Services	\$496,208.19	\$330,805.46		\$827,013.65
600 Supplies				
610 General Supplies	16,246.02	10,830.68		27,076.70
650 Supplies & Fees – Technology Related	165,674.40	110,449.60		276,124.00
Total Supplies	\$181,920.42	\$121,280.28		\$303,200.70
800 Other Objects				
810 Dues and Fees	102.00	68.00		170.00
Total Other Objects	\$102.00	\$68.00		\$170.00
Total 1440 Alternative Regular Education Programs	\$1,112,429.90	\$741,619.94		\$1,854,049.84

LEA : 123466403 Pottstown SD

Printed 2/6/2020 1:13:38 PM

General Fund (10)

1441 Adjudicated / Court-Placed Programs	<u>Elementary</u>	<u>Secondary</u>	<u>Federal</u>	<u>Total</u>
500 <u>Other Purchased Services</u>				
561 Tuition To Other School Districts Within the State	154,134.55	102,756.37		256,890.92
563 Tuition To Nonpublic Schools	114,285.22	76,190.14		190,475.36
568 Tuition To Private Residential Rehabilitative Institutions (PRRI) [In-State] and Detention Centers	43,961.56	29,307.71		73,269.27
Total Other Purchased Services	\$312,381.33	\$208,254.22		\$520,635.55
Total 1441 Adjudicated / Court-Placed Programs	\$312,381.33	\$208,254.22		\$520,635.55

LEA : 123466403 Pottstown SD

Printed 2/6/2020 1:13:38 PM

General Fund (10)				
1442 Alternative Education Programs	<u>Elementary</u>	<u>Secondary</u>	<u>Federal</u>	<u>Total</u>
100 <u>Personnel Services – Salaries</u>				
100 Personnel Services – Salaries	240,934.54	160,623.02		401,557.56
Total Personnel Services – Salaries	\$240,934.54	\$160,623.02		\$401,557.56
200 <u>Personnel Services – Employee Benefits</u>				
210 Group Insurance – Contracted Provider	50,305.44	33,536.96		83,842.40
220 Social Security Contributions	17,811.93	11,874.62		29,686.55
230 PSERS Retirement Contributions	80,511.17	53,674.12		134,185.29
260 Workers' Compensation	195.63	130.42		326.05
Total Personnel Services – Employee Benefits	\$148,824.17	\$99,216.12		\$248,040.29
300 <u>Purchased Professional and Technical Services</u>				
329 Professional Educational Services – Other	44,440.58	29,627.06		74,067.64
Total Purchased Professional and Technical Services	\$44,440.58	\$29,627.06		\$74,067.64
500 <u>Other Purchased Services</u>				
530 Communications	573.27	382.18		955.45
563 Tuition To Nonpublic Schools	180,973.54	120,649.02		301,622.56
580 Travel	2,280.05	1,520.04		3,800.09
Total Other Purchased Services	\$183,826.86	\$122,551.24		\$306,378.10
600 <u>Supplies</u>				
610 General Supplies	16,246.02	10,830.68		27,076.70
650 Supplies & Fees – Technology Related	165,674.40	110,449.60		276,124.00
Total Supplies	\$181,920.42	\$121,280.28		\$303,200.70
800 <u>Other Objects</u>				
810 Dues and Fees	102.00	68.00		170.00
Total Other Objects	\$102.00	\$68.00		\$170.00
Total 1442 Alternative Education Programs	\$800,048.57	\$533,365.72		\$1,333,414.29

LEA : 123466403 Pottstown SD

Printed 2/6/2020 1:13:38 PM

General Fund (10)				
1450 Instructional Programs Outside the Established School Day	<u>Elementary</u>	<u>Secondary</u>	<u>Federal</u>	<u>Total</u>
100 <u>Personnel Services – Salaries</u>				
100 Personnel Services – Salaries			192,454.60	192,454.60
Total Personnel Services – Salaries			\$192,454.60	\$192,454.60
200 <u>Personnel Services – Employee Benefits</u>				
210 Group Insurance – Contracted Provider			15,064.41	15,064.41
220 Social Security Contributions			14,121.12	14,121.12
230 PSERS Retirement Contributions	26,443.52	17,629.01	20,253.10	64,325.63
Total Personnel Services – Employee Benefits	\$26,443.52	\$17,629.01	\$49,438.63	\$93,511.16
300 <u>Purchased Professional and Technical Services</u>				
390 Other Purchased Professional and Technical Services			30,552.29	30,552.29
Total Purchased Professional and Technical Services			\$30,552.29	\$30,552.29
500 <u>Other Purchased Services</u>				
530 Communications			178.29	178.29
580 Travel			8,631.47	8,631.47
Total Other Purchased Services			\$8,809.76	\$8,809.76
600 <u>Supplies</u>				
610 General Supplies			34,885.01	34,885.01
Total Supplies			\$34,885.01	\$34,885.01
Total 1450 Instructional Programs Outside the Established School Day	\$26,443.52	\$17,629.01	\$316,140.29	\$360,212.82

LEA : 123466403 Pottstown SD

Printed 2/6/2020 1:13:38 PM

General Fund (10)				
1800 Pre-Kindergarten	<u>Elementary</u>	<u>Secondary</u>	<u>Federal</u>	<u>Total</u>
100 <u>Personnel Services – Salaries</u>				
100 Personnel Services – Salaries				669,464.77
Total Personnel Services – Salaries				\$669,464.77
200 <u>Personnel Services – Employee Benefits</u>				
210 Group Insurance – Contracted Provider				159,028.16
220 Social Security Contributions				49,093.64
230 PSERS Retirement Contributions				221,875.50
260 Workers' Compensation				6,600.22
Total Personnel Services – Employee Benefits				\$436,597.52
300 <u>Purchased Professional and Technical Services</u>				
310 Official / Administrative Services				435.00
323 Professional Educational Services – Other Educational Agencies				4,197.90
329 Professional Educational Services – Other				86,554.88
390 Other Purchased Professional and Technical Services				263,122.95
Total Purchased Professional and Technical Services				\$354,310.73
400 <u>Purchased Property Services</u>				
410 Cleaning Services				1,804.30
430 Repairs and Maintenance Services				77,330.00
440 Rentals				99,000.00
Total Purchased Property Services				\$178,134.30
500 <u>Other Purchased Services</u>				
510 Student Transportation Services				744.97
530 Communications				5,688.94
550 Printing and Binding				803.56
580 Travel				3,212.37
Total Other Purchased Services				\$10,449.84
600 <u>Supplies</u>				
610 General Supplies				94,953.55
Total Supplies				\$94,953.55
700 <u>Property</u>				
790 Other Property				9,118.26
Total Property				\$9,118.26
800 <u>Other Objects</u>				
890 Miscellaneous Expenditures				1,035,999.88
Total Other Objects				\$1,035,999.88
Total 1800 Pre-Kindergarten				\$2,789,028.85

LEA : 123466403 Pottstown SD

Printed 2/6/2020 1:13:38 PM

General Fund (10)				
1801 Pre-K Instruction	<u>Elementary</u>	<u>Secondary</u>	<u>Federal</u>	<u>Total</u>
100 <u>Personnel Services – Salaries</u>				
100 Personnel Services – Salaries				343,732.42
Total Personnel Services – Salaries				\$343,732.42
200 <u>Personnel Services – Employee Benefits</u>				
210 Group Insurance – Contracted Provider				67,091.80
220 Social Security Contributions				25,174.91
230 PSERS Retirement Contributions				113,659.68
Total Personnel Services – Employee Benefits				\$205,926.39
300 <u>Purchased Professional and Technical Services</u>				
323 Professional Educational Services – Other Educational Agencies				4,197.90
390 Other Purchased Professional and Technical Services				9,180.00
Total Purchased Professional and Technical Services				\$13,377.90
500 <u>Other Purchased Services</u>				
510 Student Transportation Services				744.97
530 Communications				2,297.55
Total Other Purchased Services				\$3,042.52
600 <u>Supplies</u>				
610 General Supplies				6,344.13
Total Supplies				\$6,344.13
Total 1801 Pre-K Instruction				\$572,423.36

LEA : 123466403 Pottstown SD

Printed 2/6/2020 1:13:38 PM

General Fund (10)				
1802 Pre-K Administrative Support	Elementary	Secondary	Federal	Total
100 Personnel Services – Salaries				
100 Personnel Services – Salaries				325,732.35
Total Personnel Services – Salaries				\$325,732.35
200 Personnel Services – Employee Benefits				
210 Group Insurance – Contracted Provider				91,936.36
220 Social Security Contributions				23,918.73
230 PSERS Retirement Contributions				108,215.82
260 Workers' Compensation				6,600.22
Total Personnel Services – Employee Benefits				\$230,671.13
300 Purchased Professional and Technical Services				
390 Other Purchased Professional and Technical Services				145,635.43
Total Purchased Professional and Technical Services				\$145,635.43
400 Purchased Property Services				
410 Cleaning Services				1,804.30
430 Repairs and Maintenance Services				77,330.00
440 Rentals				99,000.00
Total Purchased Property Services				\$178,134.30
500 Other Purchased Services				
530 Communications				3,391.39
550 Printing and Binding				803.56
Total Other Purchased Services				\$4,194.95
600 Supplies				
610 General Supplies				88,609.42
Total Supplies				\$88,609.42
700 Property				
790 Other Property				9,118.26
Total Property				\$9,118.26
Total 1802 Pre-K Administrative Support				\$982,095.84

LEA : 123466403 Pottstown SD

Printed 2/6/2020 1:13:38 PM

General Fund (10)

1806 Pre-K Professional Development	<u>Elementary</u>	<u>Secondary</u>	<u>Federal</u>	<u>Total</u>
300 <u>Purchased Professional and Technical Services</u>				
310 Official / Administrative Services				435.00
329 Professional Educational Services – Other				86,554.88
390 Other Purchased Professional and Technical Services				108,307.52
Total Purchased Professional and Technical Services				\$195,297.40
500 <u>Other Purchased Services</u>				
580 Travel				3,212.37
Total Other Purchased Services				\$3,212.37
Total 1806 Pre-K Professional Development				\$198,509.77

LEA : 123466403 Pottstown SD

Printed 2/6/2020 1:13:38 PM

General Fund (10)				
1807 Pre-K Pass-Through Funds (Partners)	<u>Elementary</u>	<u>Secondary</u>	<u>Federal</u>	<u>Total</u>
800 <u>Other Objects</u>				
890 Miscellaneous Expenditures				1,035,999.88
Total Other Objects				\$1,035,999.88
Total 1807 Pre-K Pass-Through Funds (Partners)				\$1,035,999.88

LEA : 123466403 Pottstown SD

Printed 2/6/2020 1:13:46 PM

General Fund (10)

2000 Support Services

Total

100	<u>Personnel Services – Salaries</u>	
100	Personnel Services – Salaries	6,808,790.96
Total Personnel Services – Salaries		\$6,808,790.96
200	<u>Personnel Services – Employee Benefits</u>	
210	Group Insurance – Contracted Provider	1,324,803.15
220	Social Security Contributions	505,770.22
230	PSERS Retirement Contributions	2,221,500.66
240	Tuition Reimbursement	92,901.50
250	Unemployment Compensation	7,498.67
260	Workers' Compensation	5,145.24
280	Other Post-Employment Benefits (OPEB)	15,091.40
299	All Other Employee Benefits	29,500.00
Total Personnel Services – Employee Benefits		\$4,202,210.84
300	<u>Purchased Professional and Technical Services</u>	
310	Official / Administrative Services	19,120.00
322	Professional Educational Services – Ius	118,665.00
329	Professional Educational Services – Other	143,449.88
330	Other Professional Services	516,255.00
350	Security / Safety Services	367,378.55
390	Other Purchased Professional and Technical Services	117,848.98
Total Purchased Professional and Technical Services		\$1,282,717.41
400	<u>Purchased Property Services</u>	
410	Cleaning Services	146,044.17
420	Utility Services	535,383.52
430	Repairs and Maintenance Services	279,925.26
440	Rentals	130,489.05
460	Extermination Services	6,616.90
490	Other Purchased Property Services	524.18
Total Purchased Property Services		\$1,098,983.08
500	<u>Other Purchased Services</u>	
513	Contracted Carriers	2,296,464.52
516	Student Transportation Services From the IU	455,528.88
520	Insurance – General	200,456.98
522	Automotive Liability Insurance	18,177.00
523	General Property and Liability Insurance	27,485.00
529	Other Insurance	8,514.00
530	Communications	115,257.63
549	Other Advertising/Public Relations	6,496.84
580	Travel	13,329.20
595	IU Payments By Withholding	17,369.95
Total Other Purchased Services		\$3,159,080.00
600	<u>Supplies</u>	
610	General Supplies	1,071,798.05
620	Energy	203,587.90

LEA : 123466403 Pottstown SD

Printed 2/6/2020 1:13:46 PM

General Fund (10)

2000 Support Services

Total

600 <u>Supplies</u>	
640 Books and Periodicals	56,807.74
650 Supplies & Fees – Technology Related	185,707.60
Total Supplies	\$1,517,901.29
700 <u>Property</u>	
752 Capital Equipment – Original and Additional	50,526.36
762 Capitalized Equipment - Replacement	9,512.32
790 Other Property	33,164.93
Total Property	\$93,203.61
800 <u>Other Objects</u>	
810 Dues and Fees	32,328.17
890 Miscellaneous Expenditures	820.05
Total Other Objects	\$33,148.22
Total 2000 Support Services	\$18,196,035.41

LEA : 123466403 Pottstown SD

Printed 2/6/2020 1:13:46 PM

General Fund (10)				
2100 Support Services – Students	<u>Elementary</u>	<u>Secondary</u>	<u>Federal</u>	<u>Total</u>
100 <u>Personnel Services – Salaries</u>				
100 Personnel Services – Salaries	693,117.06	462,078.03		1,219,409.35
Total Personnel Services – Salaries	\$693,117.06	\$462,078.03		\$1,219,409.35
200 <u>Personnel Services – Employee Benefits</u>				
210 Group Insurance – Contracted Provider	74,995.75	49,997.16		137,780.44
220 Social Security Contributions	51,264.17	34,176.12		90,215.09
230 PSERS Retirement Contributions	231,035.33	154,023.56		406,553.08
250 Unemployment Compensation	3,642.26	2,428.18		6,070.44
Total Personnel Services – Employee Benefits	\$360,937.51	\$240,625.02		\$640,619.05
300 <u>Purchased Professional and Technical Services</u>				
322 Professional Educational Services – Ius				14,625.00
329 Professional Educational Services – Other				2,501.63
330 Other Professional Services	48,570.00	32,380.00		80,950.00
Total Purchased Professional and Technical Services	\$48,570.00	\$32,380.00		\$98,076.63
400 <u>Purchased Property Services</u>				
440 Rentals	2,256.53	1,504.36		3,760.89
Total Purchased Property Services	\$2,256.53	\$1,504.36		\$3,760.89
500 <u>Other Purchased Services</u>				
530 Communications	1,066.80	711.20		1,778.00
580 Travel	346.37	230.93		1,661.30
Total Other Purchased Services	\$1,413.17	\$942.13		\$3,439.30
600 <u>Supplies</u>				
610 General Supplies	10,251.82	6,834.54		26,387.36
640 Books and Periodicals	1,875.60	1,250.40		3,126.00
Total Supplies	\$12,127.42	\$8,084.94		\$29,513.36
800 <u>Other Objects</u>				
810 Dues and Fees	215.40	143.60		499.00
Total Other Objects	\$215.40	\$143.60		\$499.00
Total 2100 Support Services – Students	\$1,118,637.09	\$745,758.08		\$1,995,317.58

LEA : 123466403 Pottstown SD

Printed 2/6/2020 1:13:46 PM

General Fund (10)				
2110 Supervision of Student Services	<u>Elementary</u>	<u>Secondary</u>	<u>Federal</u>	<u>Total</u>
100 <u>Personnel Services – Salaries</u>				
100 Personnel Services – Salaries	1,322.17	881.44		2,203.61
Total Personnel Services – Salaries	\$1,322.17	\$881.44		\$2,203.61
200 <u>Personnel Services – Employee Benefits</u>				
210 Group Insurance – Contracted Provider	916.26	610.84		1,527.10
220 Social Security Contributions	96.85	64.56		161.41
230 PSERS Retirement Contributions	442.00	294.67		736.67
250 Unemployment Compensation	2,893.39	1,928.93		4,822.32
Total Personnel Services – Employee Benefits	\$4,348.50	\$2,899.00		\$7,247.50
400 <u>Purchased Property Services</u>				
440 Rentals	2,256.53	1,504.36		3,760.89
Total Purchased Property Services	\$2,256.53	\$1,504.36		\$3,760.89
500 <u>Other Purchased Services</u>				
530 Communications	1,066.80	711.20		1,778.00
580 Travel	188.11	125.41		313.52
Total Other Purchased Services	\$1,254.91	\$836.61		\$2,091.52
600 <u>Supplies</u>				
610 General Supplies	725.97	483.98		1,209.95
640 Books and Periodicals	1,875.60	1,250.40		3,126.00
Total Supplies	\$2,601.57	\$1,734.38		\$4,335.95
Total 2110 Supervision of Student Services	\$11,783.68	\$7,855.79		\$19,639.47

LEA : 123466403 Pottstown SD

Printed 2/6/2020 1:13:46 PM

General Fund (10)					
2119 Supervision of Student Services – All Other Supervision		Elementary	Secondary	Federal	Total
100 Personnel Services – Salaries					
100	Personnel Services – Salaries	1,322.17	881.44		2,203.61
Total Personnel Services – Salaries		\$1,322.17	\$881.44		\$2,203.61
200 Personnel Services – Employee Benefits					
210	Group Insurance – Contracted Provider	916.26	610.84		1,527.10
220	Social Security Contributions	96.85	64.56		161.41
230	PSERS Retirement Contributions	442.00	294.67		736.67
250	Unemployment Compensation	2,893.39	1,928.93		4,822.32
Total Personnel Services – Employee Benefits		\$4,348.50	\$2,899.00		\$7,247.50
400 Purchased Property Services					
440	Rentals	2,256.53	1,504.36		3,760.89
Total Purchased Property Services		\$2,256.53	\$1,504.36		\$3,760.89
500 Other Purchased Services					
530	Communications	1,066.80	711.20		1,778.00
580	Travel	188.11	125.41		313.52
Total Other Purchased Services		\$1,254.91	\$836.61		\$2,091.52
600 Supplies					
610	General Supplies	725.97	483.98		1,209.95
640	Books and Periodicals	1,875.60	1,250.40		3,126.00
Total Supplies		\$2,601.57	\$1,734.38		\$4,335.95
Total 2119 Supervision of Student Services – All Other Supervision		\$11,783.68	\$7,855.79		\$19,639.47

LEA : 123466403 Pottstown SD

Printed 2/6/2020 1:13:46 PM

General Fund (10)				
2120 Guidance Services	<u>Elementary</u>	<u>Secondary</u>	<u>Federal</u>	<u>Total</u>
100 <u>Personnel Services – Salaries</u>				
100 Personnel Services – Salaries	193,223.71	128,815.81		322,039.52
Total Personnel Services – Salaries	\$193,223.71	\$128,815.81		\$322,039.52
200 <u>Personnel Services – Employee Benefits</u>				
210 Group Insurance – Contracted Provider	14,240.03	9,493.35		23,733.38
220 Social Security Contributions	14,194.85	9,463.24		23,658.09
230 PSERS Retirement Contributions	64,250.79	42,833.86		107,084.65
250 Unemployment Compensation	748.87	499.25		1,248.12
Total Personnel Services – Employee Benefits	\$93,434.54	\$62,289.70		\$155,724.24
600 <u>Supplies</u>				
610 General Supplies	55.03	36.68		91.71
Total Supplies	\$55.03	\$36.68		\$91.71
Total 2120 Guidance Services	\$286,713.28	\$191,142.19		\$477,855.47

LEA : 123466403 Pottstown SD

Printed 2/6/2020 1:13:46 PM

General Fund (10)				
2140 Psychological Services	<u>Elementary</u>	<u>Secondary</u>	<u>Federal</u>	<u>Total</u>
100 <u>Personnel Services – Salaries</u>				
100 Personnel Services – Salaries	273,421.62	182,281.08		455,702.70
Total Personnel Services – Salaries	\$273,421.62	\$182,281.08		\$455,702.70
200 <u>Personnel Services – Employee Benefits</u>				
210 Group Insurance – Contracted Provider	37,350.25	24,900.16		62,250.41
220 Social Security Contributions	20,262.80	13,508.54		33,771.34
230 PSERS Retirement Contributions	91,644.26	61,096.17		152,740.43
Total Personnel Services – Employee Benefits	\$149,257.31	\$99,504.87		\$248,762.18
300 <u>Purchased Professional and Technical Services</u>				
330 Other Professional Services	48,570.00	32,380.00		80,950.00
Total Purchased Professional and Technical Services	\$48,570.00	\$32,380.00		\$80,950.00
500 <u>Other Purchased Services</u>				
580 Travel	51.26	34.18		85.44
Total Other Purchased Services	\$51.26	\$34.18		\$85.44
600 <u>Supplies</u>				
610 General Supplies	7,889.24	5,259.49		13,148.73
Total Supplies	\$7,889.24	\$5,259.49		\$13,148.73
800 <u>Other Objects</u>				
810 Dues and Fees	215.40	143.60		359.00
Total Other Objects	\$215.40	\$143.60		\$359.00
Total 2140 Psychological Services	\$479,404.83	\$319,603.22		\$799,008.05

LEA : 123466403 Pottstown SD

Printed 2/6/2020 1:13:46 PM

General Fund (10)				
2150 Speech Pathology and Audiology Services	<u>Elementary</u>	<u>Secondary</u>	<u>Federal</u>	<u>Total</u>
100 <u>Personnel Services – Salaries</u>				
100 Personnel Services – Salaries	225,149.56	150,099.70		375,249.26
Total Personnel Services – Salaries	\$225,149.56	\$150,099.70		\$375,249.26
200 <u>Personnel Services – Employee Benefits</u>				
210 Group Insurance – Contracted Provider	22,489.21	14,992.81		37,482.02
220 Social Security Contributions	16,709.67	11,139.78		27,849.45
230 PSERS Retirement Contributions	74,698.28	49,798.86		124,497.14
Total Personnel Services – Employee Benefits	\$113,897.16	\$75,931.45		\$189,828.61
500 <u>Other Purchased Services</u>				
580 Travel	107.00	71.34		178.34
Total Other Purchased Services	\$107.00	\$71.34		\$178.34
600 <u>Supplies</u>				
610 General Supplies	1,581.58	1,054.39		2,635.97
Total Supplies	\$1,581.58	\$1,054.39		\$2,635.97
Total 2150 Speech Pathology and Audiology Services	\$340,735.30	\$227,156.88		\$567,892.18

LEA : 123466403 Pottstown SD

Printed 2/6/2020 1:13:46 PM

General Fund (10)

2160 Social Work Services

Elementary Secondary Federal Total

100 <u>Personnel Services – Salaries</u>				
100 Personnel Services – Salaries				27,606.00
Total Personnel Services – Salaries				\$27,606.00
200 <u>Personnel Services – Employee Benefits</u>				
210 Group Insurance – Contracted Provider				7,016.71
220 Social Security Contributions				2,053.39
230 PSERS Retirement Contributions				9,256.08
Total Personnel Services – Employee Benefits				\$18,326.18
Total 2160 Social Work Services				\$45,932.18

LEA : 123466403 Pottstown SD

Printed 2/6/2020 1:13:46 PM

General Fund (10)				
2170 Student Accounting Services	<u>Elementary</u>	<u>Secondary</u>	<u>Federal</u>	<u>Total</u>
100 <u>Personnel Services – Salaries</u>				
100 Personnel Services – Salaries				36,608.26
Total Personnel Services – Salaries				\$36,608.26
200 <u>Personnel Services – Employee Benefits</u>				
210 Group Insurance – Contracted Provider				5,770.82
220 Social Security Contributions				2,721.41
230 PSERS Retirement Contributions				12,238.11
Total Personnel Services – Employee Benefits				\$20,730.34
300 <u>Purchased Professional and Technical Services</u>				
322 Professional Educational Services – Ius				14,625.00
329 Professional Educational Services – Other				2,501.63
Total Purchased Professional and Technical Services				\$17,126.63
500 <u>Other Purchased Services</u>				
580 Travel				1,084.00
Total Other Purchased Services				\$1,084.00
600 <u>Supplies</u>				
610 General Supplies				9,301.00
Total Supplies				\$9,301.00
800 <u>Other Objects</u>				
810 Dues and Fees				140.00
Total Other Objects				\$140.00
Total 2170 Student Accounting Services				\$84,990.23

LEA : 123466403 Pottstown SD

Printed 2/6/2020 1:13:46 PM

General Fund (10)				
2200 Support Services – Instructional Staff	<u>Elementary</u>	<u>Secondary</u>	<u>Federal</u>	<u>Total</u>
100 <u>Personnel Services – Salaries</u>				
100 Personnel Services – Salaries	491,551.38	327,700.90	81,334.52	900,586.80
Total Personnel Services – Salaries	\$491,551.38	\$327,700.90	\$81,334.52	\$900,586.80
200 <u>Personnel Services – Employee Benefits</u>				
210 Group Insurance – Contracted Provider	106,672.42	71,114.95	6,475.89	184,263.26
220 Social Security Contributions	35,997.11	23,998.07	6,053.98	66,049.16
230 PSERS Retirement Contributions	167,900.28	111,933.53	11,264.53	291,098.34
240 Tuition Reimbursement	55,740.90	37,160.60		92,901.50
250 Unemployment Compensation	831.71	554.48		1,386.19
Total Personnel Services – Employee Benefits	\$367,142.42	\$244,761.63	\$23,794.40	\$635,698.45
300 <u>Purchased Professional and Technical Services</u>				
322 Professional Educational Services – lus	62,424.00	41,616.00		104,040.00
329 Professional Educational Services – Other	2,589.30	1,726.20	720.00	5,035.50
390 Other Purchased Professional and Technical Services	132.00	88.00		220.00
Total Purchased Professional and Technical Services	\$65,145.30	\$43,430.20	\$720.00	\$109,295.50
400 <u>Purchased Property Services</u>				
430 Repairs and Maintenance Services	23,453.90	15,635.93		39,089.83
440 Rentals	6,945.76	4,630.50		11,576.26
Total Purchased Property Services	\$30,399.66	\$20,266.43		\$50,666.09
500 <u>Other Purchased Services</u>				
530 Communications	2,728.82	1,819.21		4,548.03
580 Travel	2,636.72	1,757.83	1,530.00	5,924.55
Total Other Purchased Services	\$5,365.54	\$3,577.04	\$1,530.00	\$10,472.58
600 <u>Supplies</u>				
610 General Supplies	140,120.09	93,413.39	416.70	233,950.18
640 Books and Periodicals	29,996.24	19,997.50		49,993.74
650 Supplies & Fees – Technology Related	111,260.40	74,173.61		185,434.01
Total Supplies	\$281,376.73	\$187,584.50	\$416.70	\$469,377.93
700 <u>Property</u>				
762 Capitalized Equipment - Replacement	1,714.80	1,143.20		2,858.00
790 Other Property	3,336.19	2,224.12		5,560.31
Total Property	\$5,050.99	\$3,367.32		\$8,418.31
800 <u>Other Objects</u>				
810 Dues and Fees	53.40	35.60		89.00
Total Other Objects	\$53.40	\$35.60		\$89.00
Total 2200 Support Services – Instructional Staff	\$1,246,085.42	\$830,723.62	\$107,795.62	\$2,184,604.66

LEA : 123466403 Pottstown SD

Printed 2/6/2020 1:13:46 PM

General Fund (10)				
2210 Supervision of Educational Media Services	<u>Elementary</u>	<u>Secondary</u>	<u>Federal</u>	<u>Total</u>
100 <u>Personnel Services – Salaries</u>				
100 Personnel Services – Salaries	43,200.48	28,800.32		72,000.80
Total Personnel Services – Salaries	\$43,200.48	\$28,800.32		\$72,000.80
200 <u>Personnel Services – Employee Benefits</u>				
210 Group Insurance – Contracted Provider	10,351.85	6,901.24		17,253.09
220 Social Security Contributions	3,235.15	2,156.76		5,391.91
230 PSERS Retirement Contributions	14,441.90	9,627.93		24,069.83
Total Personnel Services – Employee Benefits	\$28,028.90	\$18,685.93		\$46,714.83
300 <u>Purchased Professional and Technical Services</u>				
322 Professional Educational Services – Ius	62,424.00	41,616.00		104,040.00
Total Purchased Professional and Technical Services	\$62,424.00	\$41,616.00		\$104,040.00
500 <u>Other Purchased Services</u>				
530 Communications	2,039.63	1,359.75		3,399.38
Total Other Purchased Services	\$2,039.63	\$1,359.75		\$3,399.38
Total 2210 Supervision of Educational Media Services	\$135,693.01	\$90,462.00		\$226,155.01

LEA : 123466403 Pottstown SD

Printed 2/6/2020 1:13:46 PM

General Fund (10)

2211 Supervision of Educational Media Services – Head of Component	<u>Elementary</u>	<u>Secondary</u>	<u>Federal</u>	<u>Total</u>
300 <u>Purchased Professional and Technical Services</u>				
322 Professional Educational Services – lus	62,424.00	41,616.00		104,040.00
Total Purchased Professional and Technical Services	\$62,424.00	\$41,616.00		\$104,040.00
Total 2211 Supervision of Educational Media Services – Head of Component	\$62,424.00	\$41,616.00		\$104,040.00

LEA : 123466403 Pottstown SD

Printed 2/6/2020 1:13:46 PM

General Fund (10)

2219 Supervision of Educational Media Services – All Other Supervision	<u>Elementary</u>	<u>Secondary</u>	<u>Federal</u>	<u>Total</u>
100 <u>Personnel Services – Salaries</u>				
100 Personnel Services – Salaries	43,200.48	28,800.32		72,000.80
Total Personnel Services – Salaries	\$43,200.48	\$28,800.32		\$72,000.80
200 <u>Personnel Services – Employee Benefits</u>				
210 Group Insurance – Contracted Provider	10,351.85	6,901.24		17,253.09
220 Social Security Contributions	3,235.15	2,156.76		5,391.91
230 PSERS Retirement Contributions	14,441.90	9,627.93		24,069.83
Total Personnel Services – Employee Benefits	\$28,028.90	\$18,685.93		\$46,714.83
500 <u>Other Purchased Services</u>				
530 Communications	2,039.63	1,359.75		3,399.38
Total Other Purchased Services	\$2,039.63	\$1,359.75		\$3,399.38
Total 2219 Supervision of Educational Media Services – All Other Supervision	\$73,269.01	\$48,846.00		\$122,115.01

LEA : 123466403 Pottstown SD

Printed 2/6/2020 1:13:46 PM

General Fund (10)				
2220 Technology Support Services	<u>Elementary</u>	<u>Secondary</u>	<u>Federal</u>	<u>Total</u>
100 <u>Personnel Services – Salaries</u>				
100 Personnel Services – Salaries	97,449.34	64,966.22		162,415.56
Total Personnel Services – Salaries	\$97,449.34	\$64,966.22		\$162,415.56
200 <u>Personnel Services – Employee Benefits</u>				
210 Group Insurance – Contracted Provider	35,553.31	23,702.21		59,255.52
220 Social Security Contributions	6,931.10	4,620.74		11,551.84
230 PSERS Retirement Contributions	32,577.27	21,718.18		54,295.45
Total Personnel Services – Employee Benefits	\$75,061.68	\$50,041.13		\$125,102.81
500 <u>Other Purchased Services</u>				
580 Travel	1,390.12	926.75		2,316.87
Total Other Purchased Services	\$1,390.12	\$926.75		\$2,316.87
600 <u>Supplies</u>				
650 Supplies & Fees – Technology Related	14,515.20	9,676.80		24,192.00
Total Supplies	\$14,515.20	\$9,676.80		\$24,192.00
Total 2220 Technology Support Services	\$188,416.34	\$125,610.90		\$314,027.24

LEA : 123466403 Pottstown SD

Printed 2/6/2020 1:13:46 PM

General Fund (10)				
2240 Computer-Assisted Instruction Support Services	<u>Elementary</u>	<u>Secondary</u>	<u>Federal</u>	<u>Total</u>
300 <u>Purchased Professional and Technical Services</u>				
329 Professional Educational Services – Other	1,629.90	1,086.60		2,716.50
Total Purchased Professional and Technical Services	\$1,629.90	\$1,086.60		\$2,716.50
400 <u>Purchased Property Services</u>				
430 Repairs and Maintenance Services	23,453.90	15,635.93		39,089.83
440 Rentals	6,945.76	4,630.50		11,576.26
Total Purchased Property Services	\$30,399.66	\$20,266.43		\$50,666.09
600 <u>Supplies</u>				
610 General Supplies	128,134.42	85,422.94		213,557.36
640 Books and Periodicals	11,535.75	7,690.50		19,226.25
650 Supplies & Fees – Technology Related	83,446.19	55,630.80		139,076.99
Total Supplies	\$223,116.36	\$148,744.24		\$371,860.60
700 <u>Property</u>				
762 Capitalized Equipment - Replacement	1,714.80	1,143.20		2,858.00
790 Other Property	3,336.19	2,224.12		5,560.31
Total Property	\$5,050.99	\$3,367.32		\$8,418.31
Total 2240 Computer-Assisted Instruction Support Services	\$260,196.91	\$173,464.59		\$433,661.50

LEA : 123466403 Pottstown SD

Printed 2/6/2020 1:13:46 PM

General Fund (10)					
2250 School Library Services		Elementary	Secondary	Federal	Total
100 Personnel Services – Salaries					
100 Personnel Services – Salaries		231,306.20	154,204.13		385,510.33
Total Personnel Services – Salaries		\$231,306.20	\$154,204.13		\$385,510.33
200 Personnel Services – Employee Benefits					
210 Group Insurance – Contracted Provider		39,713.29	26,475.52		66,188.81
220 Social Security Contributions		16,970.74	11,313.82		28,284.56
230 PSERS Retirement Contributions		75,470.33	50,313.55		125,783.88
250 Unemployment Compensation		831.71	554.48		1,386.19
Total Personnel Services – Employee Benefits		\$132,986.07	\$88,657.37		\$221,643.44
600 Supplies					
610 General Supplies		6,394.56	4,263.04		10,657.60
640 Books and Periodicals		8,709.14	5,806.10		14,515.24
Total Supplies		\$15,103.70	\$10,069.14		\$25,172.84
Total 2250 School Library Services		\$379,395.97	\$252,930.64		\$632,326.61

LEA : 123466403 Pottstown SD

Printed 2/6/2020 1:13:46 PM

General Fund (10)

2260 Instruction and Curriculum Development Services	<u>Elementary</u>	<u>Secondary</u>	<u>Federal</u>	<u>Total</u>
100 <u>Personnel Services – Salaries</u>				
100 Personnel Services – Salaries	115,327.97	76,885.31	6,576.90	198,790.18
Total Personnel Services – Salaries	\$115,327.97	\$76,885.31	\$6,576.90	\$198,790.18
200 <u>Personnel Services – Employee Benefits</u>				
210 Group Insurance – Contracted Provider	19,743.51	13,162.34	1,153.62	34,059.47
220 Social Security Contributions	8,545.01	5,696.68	476.79	14,718.48
230 PSERS Retirement Contributions	35,302.19	23,534.80	659.60	59,496.59
Total Personnel Services – Employee Benefits	\$63,590.71	\$42,393.82	\$2,290.01	\$108,274.54
500 <u>Other Purchased Services</u>				
530 Communications	689.19	459.46		1,148.65
580 Travel	756.26	504.18		1,260.44
Total Other Purchased Services	\$1,445.45	\$963.64		\$2,409.09
600 <u>Supplies</u>				
610 General Supplies	5,097.26	3,398.17		8,495.43
640 Books and Periodicals	7,423.65	4,949.10		12,372.75
650 Supplies & Fees – Technology Related	13,299.01	8,866.01		22,165.02
Total Supplies	\$25,819.92	\$17,213.28		\$43,033.20
800 <u>Other Objects</u>				
810 Dues and Fees	53.40	35.60		89.00
Total Other Objects	\$53.40	\$35.60		\$89.00
Total 2260 Instruction and Curriculum Development Services	\$206,237.45	\$137,491.65	\$8,866.91	\$352,596.01

LEA : 123466403 Pottstown SD

Printed 2/6/2020 1:13:46 PM

General Fund (10)

2270 Instructional Staff Professional Development Services	Elementary	Secondary	Federal	Total
100 Personnel Services – Salaries				
100 Personnel Services – Salaries	4,267.39	2,844.92	74,263.76	81,376.07
Total Personnel Services – Salaries	\$4,267.39	\$2,844.92	\$74,263.76	\$81,376.07
200 Personnel Services – Employee Benefits				
210 Group Insurance – Contracted Provider	1,310.46	873.64	5,275.46	7,459.56
220 Social Security Contributions	315.11	210.07	5,540.52	6,065.70
230 PSERS Retirement Contributions	10,039.24	6,692.83	10,555.40	27,287.47
240 Tuition Reimbursement	55,740.90	37,160.60		92,901.50
Total Personnel Services – Employee Benefits	\$67,405.71	\$44,937.14	\$21,371.38	\$133,714.23
300 Purchased Professional and Technical Services				
329 Professional Educational Services – Other	959.40	639.60	720.00	2,319.00
390 Other Purchased Professional and Technical Services	132.00	88.00		220.00
Total Purchased Professional and Technical Services	\$1,091.40	\$727.60	\$720.00	\$2,539.00
500 Other Purchased Services				
580 Travel	490.34	326.90	1,530.00	2,347.24
Total Other Purchased Services	\$490.34	\$326.90	\$1,530.00	\$2,347.24
600 Supplies				
610 General Supplies	493.85	329.24	416.70	1,239.79
640 Books and Periodicals	2,327.70	1,551.80		3,879.50
Total Supplies	\$2,821.55	\$1,881.04	\$416.70	\$5,119.29
Total 2270 Instructional Staff Professional Development Services	\$76,076.39	\$50,717.60	\$98,301.84	\$225,095.83

LEA : 123466403 Pottstown SD

Printed 2/6/2020 1:13:46 PM

General Fund (10)

2280 Nonpublic Support Services

	<u>Elementary</u>	<u>Secondary</u>	<u>Federal</u>	<u>Total</u>
100 <u>Personnel Services – Salaries</u>				
100 Personnel Services – Salaries			493.86	493.86
Total Personnel Services – Salaries			\$493.86	\$493.86
200 <u>Personnel Services – Employee Benefits</u>				
210 Group Insurance – Contracted Provider			46.81	46.81
220 Social Security Contributions			36.67	36.67
230 PSERS Retirement Contributions	69.35	46.24	49.53	165.12
Total Personnel Services – Employee Benefits	\$69.35	\$46.24	\$133.01	\$248.60
Total 2280 Nonpublic Support Services	\$69.35	\$46.24	\$626.87	\$742.46

LEA : 123466403 Pottstown SD

Printed 2/6/2020 1:13:46 PM

General Fund (10)				
2300 Support Services – Administration	<u>Elementary</u>	<u>Secondary</u>	<u>Federal</u>	<u>Total</u>
100 <u>Personnel Services – Salaries</u>				
100 Personnel Services – Salaries	800,525.48	533,683.65		1,671,670.36
Total Personnel Services – Salaries	\$800,525.48	\$533,683.65		\$1,671,670.36
200 <u>Personnel Services – Employee Benefits</u>				
210 Group Insurance – Contracted Provider	173,875.55	115,917.03		360,027.92
220 Social Security Contributions	59,381.89	39,587.92		121,730.53
230 PSERS Retirement Contributions	257,249.78	171,499.86		544,515.32
260 Workers' Compensation	969.56	646.37		1,615.93
280 Other Post-Employment Benefits (OPEB)	773.40	515.60		15,091.40
299 All Other Employee Benefits				12,500.00
Total Personnel Services – Employee Benefits	\$492,250.18	\$328,166.78		\$1,055,481.10
300 <u>Purchased Professional and Technical Services</u>				
329 Professional Educational Services – Other				9,513.70
330 Other Professional Services				188,797.71
350 Security / Safety Services	51,377.48	34,251.65		85,629.13
390 Other Purchased Professional and Technical Services				104,000.92
Total Purchased Professional and Technical Services	\$51,377.48	\$34,251.65		\$387,941.46
400 <u>Purchased Property Services</u>				
440 Rentals	41,780.53	27,853.69	7,220.97	77,414.72
Total Purchased Property Services	\$41,780.53	\$27,853.69	\$7,220.97	\$77,414.72
500 <u>Other Purchased Services</u>				
520 Insurance – General				195,692.00
530 Communications	12,569.99	8,380.00		29,261.84
549 Other Advertising/Public Relations	532.75	355.17		6,496.84
580 Travel	178.82	119.22		1,887.29
Total Other Purchased Services	\$13,281.56	\$8,854.39		\$233,337.97
600 <u>Supplies</u>				
610 General Supplies	57,853.96	38,569.30		161,522.19
640 Books and Periodicals	2,212.80	1,475.20		3,688.00
Total Supplies	\$60,066.76	\$40,044.50		\$165,210.19
800 <u>Other Objects</u>				
810 Dues and Fees	1,760.15	1,173.44		28,183.08
Total Other Objects	\$1,760.15	\$1,173.44		\$28,183.08
Total 2300 Support Services – Administration	\$1,461,042.14	\$974,028.10	\$7,220.97	\$3,619,238.88

LEA : 123466403 Pottstown SD

Printed 2/6/2020 1:13:46 PM

General Fund (10)				
2310 Board Services	<u>Elementary</u>	<u>Secondary</u>	<u>Federal</u>	<u>Total</u>
300 <u>Purchased Professional and Technical Services</u>				
330 Other Professional Services				60,753.47
Total Purchased Professional and Technical Services				\$60,753.47
500 <u>Other Purchased Services</u>				
520 Insurance – General				195,692.00
549 Other Advertising/Public Relations				5,608.92
Total Other Purchased Services				\$201,300.92
800 <u>Other Objects</u>				
810 Dues and Fees				14,126.73
Total Other Objects				\$14,126.73
Total 2310 Board Services				\$276,181.12

LEA : 123466403 Pottstown SD

Printed 2/6/2020 1:13:46 PM

General Fund (10)				
2330 Tax Assessment and Collection Services	<u>Elementary</u>	<u>Secondary</u>	<u>Federal</u>	<u>Total</u>
300 <u>Purchased Professional and Technical Services</u>				
330 Other Professional Services				97,209.38
390 Other Purchased Professional and Technical Services				104,000.92
Total Purchased Professional and Technical Services				\$201,210.30
400 <u>Purchased Property Services</u>				
440 Rentals				559.53
Total Purchased Property Services				\$559.53
500 <u>Other Purchased Services</u>				
530 Communications				6,376.12
Total Other Purchased Services				\$6,376.12
Total 2330 Tax Assessment and Collection Services				\$208,145.95

LEA : 123466403 Pottstown SD

Printed 2/6/2020 1:13:46 PM

General Fund (10)				
2340 Staff Relations and Negotiations Services	<u>Elementary</u>	<u>Secondary</u>	<u>Federal</u>	<u>Total</u>
100 <u>Personnel Services – Salaries</u>				
100 Personnel Services – Salaries				68,219.05
Total Personnel Services – Salaries				\$68,219.05
200 <u>Personnel Services – Employee Benefits</u>				
210 Group Insurance – Contracted Provider				28,696.12
220 Social Security Contributions				4,947.91
230 PSERS Retirement Contributions				22,805.50
Total Personnel Services – Employee Benefits				\$56,449.53
300 <u>Purchased Professional and Technical Services</u>				
329 Professional Educational Services – Other				9,214.70
330 Other Professional Services				20,174.00
Total Purchased Professional and Technical Services				\$29,388.70
500 <u>Other Purchased Services</u>				
530 Communications				1,225.26
Total Other Purchased Services				\$1,225.26
600 <u>Supplies</u>				
610 General Supplies				54,321.88
Total Supplies				\$54,321.88
800 <u>Other Objects</u>				
810 Dues and Fees				8,694.76
Total Other Objects				\$8,694.76
Total 2340 Staff Relations and Negotiations Services				\$218,299.18

LEA : 123466403 Pottstown SD

Printed 2/6/2020 1:13:46 PM

General Fund (10)

2350 Legal and Accounting Services	<u>Elementary</u>	<u>Secondary</u>	<u>Federal</u>	<u>Total</u>
300 <u>Purchased Professional and Technical Services</u>				
330 Other Professional Services				8,660.86
Total Purchased Professional and Technical Services				\$8,660.86
Total 2350 Legal and Accounting Services				\$8,660.86

LEA : 123466403 Pottstown SD

Printed 2/6/2020 1:13:46 PM

General Fund (10)				
2360 Office of the Superintendent / Executive Director Services	<u>Elementary</u>	<u>Secondary</u>	<u>Federal</u>	<u>Total</u>
100 <u>Personnel Services – Salaries</u>				
100 Personnel Services – Salaries				228,663.86
Total Personnel Services – Salaries				\$228,663.86
200 <u>Personnel Services – Employee Benefits</u>				
210 Group Insurance – Contracted Provider				37,140.29
220 Social Security Contributions				14,760.74
230 PSERS Retirement Contributions				79,617.98
280 Other Post-Employment Benefits (OPEB)				13,802.40
299 All Other Employee Benefits				12,500.00
Total Personnel Services – Employee Benefits				\$157,821.41
300 <u>Purchased Professional and Technical Services</u>				
329 Professional Educational Services – Other				299.00
330 Other Professional Services				2,000.00
Total Purchased Professional and Technical Services				\$2,299.00
500 <u>Other Purchased Services</u>				
530 Communications	2,190.93	1,460.62		3,651.55
580 Travel				1,322.20
Total Other Purchased Services	\$2,190.93	\$1,460.62		\$4,973.75
600 <u>Supplies</u>				
610 General Supplies				10,553.11
Total Supplies				\$10,553.11
800 <u>Other Objects</u>				
810 Dues and Fees				2,048.00
Total Other Objects				\$2,048.00
Total 2360 Office of the Superintendent / Executive Director Services	\$2,190.93	\$1,460.62		\$406,359.13

LEA : 123466403 Pottstown SD

Printed 2/6/2020 1:13:46 PM

General Fund (10)

2370 Community Relations Services	<u>Elementary</u>	<u>Secondary</u>	<u>Federal</u>	<u>Total</u>
100 <u>Personnel Services – Salaries</u>				
100 Personnel Services – Salaries				40,578.32
Total Personnel Services – Salaries				\$40,578.32
200 <u>Personnel Services – Employee Benefits</u>				
210 Group Insurance – Contracted Provider				4,398.93
220 Social Security Contributions				3,052.07
230 PSERS Retirement Contributions				13,342.20
Total Personnel Services – Employee Benefits				\$20,793.20
500 <u>Other Purchased Services</u>				
530 Communications				710.47
580 Travel				267.05
Total Other Purchased Services				\$977.52
600 <u>Supplies</u>				
610 General Supplies				23.94
Total Supplies				\$23.94
800 <u>Other Objects</u>				
810 Dues and Fees				380.00
Total Other Objects				\$380.00
Total 2370 Community Relations Services				\$62,752.98

LEA : 123466403 Pottstown SD

Printed 2/6/2020 1:13:46 PM

General Fund (10)				
2380 Office of the Principal Services	<u>Elementary</u>	<u>Secondary</u>	<u>Federal</u>	<u>Total</u>
100 <u>Personnel Services – Salaries</u>				
100 Personnel Services – Salaries	800,525.48	533,683.65		1,334,209.13
Total Personnel Services – Salaries	\$800,525.48	\$533,683.65		\$1,334,209.13
200 <u>Personnel Services – Employee Benefits</u>				
210 Group Insurance – Contracted Provider	173,875.55	115,917.03		289,792.58
220 Social Security Contributions	59,381.89	39,587.92		98,969.81
230 PSERS Retirement Contributions	257,249.78	171,499.86		428,749.64
260 Workers' Compensation	969.56	646.37		1,615.93
280 Other Post-Employment Benefits (OPEB)	773.40	515.60		1,289.00
Total Personnel Services – Employee Benefits	\$492,250.18	\$328,166.78		\$820,416.96
300 <u>Purchased Professional and Technical Services</u>				
350 Security / Safety Services	51,377.48	34,251.65		85,629.13
Total Purchased Professional and Technical Services	\$51,377.48	\$34,251.65		\$85,629.13
400 <u>Purchased Property Services</u>				
440 Rentals	41,780.53	27,853.69	7,220.97	76,855.19
Total Purchased Property Services	\$41,780.53	\$27,853.69	\$7,220.97	\$76,855.19
500 <u>Other Purchased Services</u>				
530 Communications	10,379.06	6,919.38		17,298.44
549 Other Advertising/Public Relations	532.75	355.17		887.92
580 Travel	178.82	119.22		298.04
Total Other Purchased Services	\$11,090.63	\$7,393.77		\$18,484.40
600 <u>Supplies</u>				
610 General Supplies	57,853.96	38,569.30		96,423.26
640 Books and Periodicals	2,212.80	1,475.20		3,688.00
Total Supplies	\$60,066.76	\$40,044.50		\$100,111.26
800 <u>Other Objects</u>				
810 Dues and Fees	1,760.15	1,173.44		2,933.59
Total Other Objects	\$1,760.15	\$1,173.44		\$2,933.59
Total 2380 Office of the Principal Services	\$1,458,851.21	\$972,567.48	\$7,220.97	\$2,438,639.66

LEA : 123466403 Pottstown SD

Printed 2/6/2020 1:13:46 PM

General Fund (10)

2390 Other Administration Services	<u>Elementary</u>	<u>Secondary</u>	<u>Federal</u>	<u>Total</u>
600 <u>Supplies</u>				
610 General Supplies				200.00
Total Supplies				\$200.00
Total 2390 Other Administration Services				\$200.00

LEA : 123466403 Pottstown SD

Printed 2/6/2020 1:13:46 PM

General Fund (10)				
2400 Support Services – Pupil Health	<u>Elementary</u>	<u>Secondary</u>	<u>Federal</u>	<u>Total</u>
100 <u>Personnel Services – Salaries</u>				
100 Personnel Services – Salaries			66,553.80	470,540.43
Total Personnel Services – Salaries			\$66,553.80	\$470,540.43
200 <u>Personnel Services – Employee Benefits</u>				
210 Group Insurance – Contracted Provider			20,605.50	97,436.11
220 Social Security Contributions			4,856.32	36,815.79
230 PSERS Retirement Contributions			22,229.82	156,124.01
Total Personnel Services – Employee Benefits			\$47,691.64	\$290,375.91
300 <u>Purchased Professional and Technical Services</u>				
329 Professional Educational Services – Other				12,805.68
330 Other Professional Services				156,588.44
Total Purchased Professional and Technical Services				\$169,394.12
500 <u>Other Purchased Services</u>				
530 Communications				1,462.44
580 Travel				46.40
Total Other Purchased Services				\$1,508.84
600 <u>Supplies</u>				
610 General Supplies				26,552.82
Total Supplies				\$26,552.82
Total 2400 Support Services – Pupil Health			\$114,245.44	\$958,372.12

LEA : 123466403 Pottstown SD

Printed 2/6/2020 1:13:46 PM

General Fund (10)				
2420 Medical Services				
	<u>Elementary</u>	<u>Secondary</u>	<u>Federal</u>	<u>Total</u>
100 <u>Personnel Services – Salaries</u>				
100 Personnel Services – Salaries			66,553.80	233,653.17
Total Personnel Services – Salaries			\$66,553.80	\$233,653.17
200 <u>Personnel Services – Employee Benefits</u>				
210 Group Insurance – Contracted Provider			20,605.50	77,017.94
220 Social Security Contributions			4,856.32	16,529.46
230 PSERS Retirement Contributions			22,229.82	78,342.15
Total Personnel Services – Employee Benefits			\$47,691.64	\$171,889.55
300 <u>Purchased Professional and Technical Services</u>				
329 Professional Educational Services – Other				12,805.68
330 Other Professional Services				78,253.78
Total Purchased Professional and Technical Services				\$91,059.46
500 <u>Other Purchased Services</u>				
530 Communications				1,462.44
580 Travel				46.40
Total Other Purchased Services				\$1,508.84
600 <u>Supplies</u>				
610 General Supplies				6,381.01
Total Supplies				\$6,381.01
Total 2420 Medical Services			\$114,245.44	\$504,492.03

LEA : 123466403 Pottstown SD

Printed 2/6/2020 1:13:46 PM

General Fund (10)

2430 Dental Services

<u>Elementary</u>	<u>Secondary</u>	<u>Federal</u>	<u>Total</u>
-------------------	------------------	----------------	--------------

300 Purchased Professional and Technical Services

330 Other Professional Services			1,424.00
---------------------------------	--	--	----------

Total Purchased Professional and Technical Services			\$1,424.00
--	--	--	-------------------

Total 2430 Dental Services			\$1,424.00
-----------------------------------	--	--	-------------------

LEA : 123466403 Pottstown SD

Printed 2/6/2020 1:13:46 PM

General Fund (10)				
2440 Nursing Services	<u>Elementary</u>	<u>Secondary</u>	<u>Federal</u>	<u>Total</u>
100 <u>Personnel Services – Salaries</u>				
100 Personnel Services – Salaries				236,887.26
Total Personnel Services – Salaries				\$236,887.26
200 <u>Personnel Services – Employee Benefits</u>				
210 Group Insurance – Contracted Provider				20,418.17
220 Social Security Contributions				20,286.33
230 PSERS Retirement Contributions				77,781.86
Total Personnel Services – Employee Benefits				\$118,486.36
300 <u>Purchased Professional and Technical Services</u>				
330 Other Professional Services				76,910.66
Total Purchased Professional and Technical Services				\$76,910.66
600 <u>Supplies</u>				
610 General Supplies				20,171.81
Total Supplies				\$20,171.81
Total 2440 Nursing Services				\$452,456.09

LEA : 123466403 Pottstown SD

Printed 2/6/2020 1:13:46 PM

General Fund (10)					
2500 Support Services – Business		<u>Elementary</u>	<u>Secondary</u>	<u>Federal</u>	<u>Total</u>
100 <u>Personnel Services – Salaries</u>					
100 Personnel Services – Salaries				4,428.84	425,905.55
Total Personnel Services – Salaries				\$4,428.84	\$425,905.55
200 <u>Personnel Services – Employee Benefits</u>					
210 Group Insurance – Contracted Provider				1,181.59	84,059.29
220 Social Security Contributions				330.68	31,747.65
230 PSERS Retirement Contributions				484.04	136,898.85
299 All Other Employee Benefits					17,000.00
Total Personnel Services – Employee Benefits				\$1,996.31	\$269,705.79
300 <u>Purchased Professional and Technical Services</u>					
329 Professional Educational Services – Other					19,726.98
330 Other Professional Services				11,500.00	66,622.85
390 Other Purchased Professional and Technical Services					10.00
Total Purchased Professional and Technical Services				\$11,500.00	\$86,359.83
400 <u>Purchased Property Services</u>					
440 Rentals					37,737.18
Total Purchased Property Services					\$37,737.18
500 <u>Other Purchased Services</u>					
520 Insurance – General					4,764.98
530 Communications					16,356.77
580 Travel					2,358.35
Total Other Purchased Services					\$23,480.10
600 <u>Supplies</u>					
610 General Supplies					33,281.53
Total Supplies					\$33,281.53
800 <u>Other Objects</u>					
810 Dues and Fees					2,748.09
890 Miscellaneous Expenditures					820.05
Total Other Objects					\$3,568.14
Total 2500 Support Services – Business				\$17,925.15	\$880,038.12

LEA : 123466403 Pottstown SD

Printed 2/6/2020 1:13:46 PM

General Fund (10)				
2510 Fiscal Services				
	<u>Elementary</u>	<u>Secondary</u>	<u>Federal</u>	<u>Total</u>
100 <u>Personnel Services – Salaries</u>				
100 Personnel Services – Salaries			4,428.84	425,905.55
Total Personnel Services – Salaries			\$4,428.84	\$425,905.55
200 <u>Personnel Services – Employee Benefits</u>				
210 Group Insurance – Contracted Provider			1,181.59	84,059.29
220 Social Security Contributions			330.68	31,747.65
230 PSERS Retirement Contributions			484.04	136,898.85
299 All Other Employee Benefits				17,000.00
Total Personnel Services – Employee Benefits			\$1,996.31	\$269,705.79
300 <u>Purchased Professional and Technical Services</u>				
329 Professional Educational Services – Other				2,730.74
330 Other Professional Services			11,500.00	66,622.85
390 Other Purchased Professional and Technical Services				10.00
Total Purchased Professional and Technical Services			\$11,500.00	\$69,363.59
400 <u>Purchased Property Services</u>				
440 Rentals				4,296.72
Total Purchased Property Services				\$4,296.72
500 <u>Other Purchased Services</u>				
520 Insurance – General				4,764.98
530 Communications				16,356.77
580 Travel				2,358.35
Total Other Purchased Services				\$23,480.10
600 <u>Supplies</u>				
610 General Supplies				9,275.82
Total Supplies				\$9,275.82
800 <u>Other Objects</u>				
810 Dues and Fees				2,748.09
890 Miscellaneous Expenditures				820.05
Total Other Objects				\$3,568.14
Total 2510 Fiscal Services			\$17,925.15	\$805,595.71

LEA : 123466403 Pottstown SD

Printed 2/6/2020 1:13:46 PM

General Fund (10)				
2511 Supervision of Fiscal Services - Head of Component	<u>Elementary</u>	<u>Secondary</u>	<u>Federal</u>	<u>Total</u>
100 <u>Personnel Services – Salaries</u>				
100 Personnel Services – Salaries				164,635.61
Total Personnel Services – Salaries				\$164,635.61
200 <u>Personnel Services – Employee Benefits</u>				
210 Group Insurance – Contracted Provider				23,072.02
220 Social Security Contributions				12,069.55
230 PSERS Retirement Contributions				55,037.83
299 All Other Employee Benefits				2,000.00
Total Personnel Services – Employee Benefits				\$92,179.40
300 <u>Purchased Professional and Technical Services</u>				
329 Professional Educational Services – Other				1,290.00
330 Other Professional Services			11,500.00	59,083.85
Total Purchased Professional and Technical Services			\$11,500.00	\$60,373.85
500 <u>Other Purchased Services</u>				
580 Travel				334.73
Total Other Purchased Services				\$334.73
600 <u>Supplies</u>				
610 General Supplies				4,305.60
Total Supplies				\$4,305.60
800 <u>Other Objects</u>				
810 Dues and Fees				2,575.87
Total Other Objects				\$2,575.87
Total 2511 Supervision of Fiscal Services - Head of Component			\$11,500.00	\$324,405.06

LEA : 123466403 Pottstown SD

Printed 2/6/2020 1:13:46 PM

General Fund (10)

2512 Budgeting Services	<u>Elementary</u>	<u>Secondary</u>	<u>Federal</u>	<u>Total</u>
100 <u>Personnel Services – Salaries</u>				
100 Personnel Services – Salaries				84,999.98
Total Personnel Services – Salaries				\$84,999.98
200 <u>Personnel Services – Employee Benefits</u>				
210 Group Insurance – Contracted Provider				20,807.78
220 Social Security Contributions				6,539.38
230 PSERS Retirement Contributions				28,415.40
299 All Other Employee Benefits				15,000.00
Total Personnel Services – Employee Benefits				\$70,762.56
500 <u>Other Purchased Services</u>				
580 Travel				1,771.22
Total Other Purchased Services				\$1,771.22
Total 2512 Budgeting Services				\$157,533.76

LEA : 123466403 Pottstown SD

Printed 2/6/2020 1:13:46 PM

General Fund (10)

2513 Receiving and Disbursing Funds Services

Elementary Secondary Federal Total

100 <u>Personnel Services – Salaries</u>				
100 Personnel Services – Salaries				77,491.55
Total Personnel Services – Salaries				\$77,491.55
200 <u>Personnel Services – Employee Benefits</u>				
210 Group Insurance – Contracted Provider				16,965.50
220 Social Security Contributions				5,811.10
230 PSERS Retirement Contributions				20,425.41
Total Personnel Services – Employee Benefits				\$43,202.01
600 <u>Supplies</u>				
610 General Supplies				79.00
Total Supplies				\$79.00
Total 2513 Receiving and Disbursing Funds Services				\$120,772.56

LEA : 123466403 Pottstown SD

Printed 2/6/2020 1:13:46 PM

General Fund (10)				
2514 Payroll Services				
	<u>Elementary</u>	<u>Secondary</u>	<u>Federal</u>	<u>Total</u>
100 <u>Personnel Services – Salaries</u>				
100 Personnel Services – Salaries			4,428.84	59,434.91
Total Personnel Services – Salaries			\$4,428.84	\$59,434.91
200 <u>Personnel Services – Employee Benefits</u>				
210 Group Insurance – Contracted Provider			1,181.59	16,473.00
220 Social Security Contributions			330.68	4,406.37
230 PSERS Retirement Contributions			484.04	19,864.62
Total Personnel Services – Employee Benefits			\$1,996.31	\$40,743.99
300 <u>Purchased Professional and Technical Services</u>				
329 Professional Educational Services – Other				285.00
Total Purchased Professional and Technical Services				\$285.00
500 <u>Other Purchased Services</u>				
580 Travel				49.02
Total Other Purchased Services				\$49.02
600 <u>Supplies</u>				
610 General Supplies				309.71
Total Supplies				\$309.71
800 <u>Other Objects</u>				
810 Dues and Fees				172.22
Total Other Objects				\$172.22
Total 2514 Payroll Services			\$6,425.15	\$100,994.85

LEA : 123466403 Pottstown SD

Printed 2/6/2020 1:13:46 PM

General Fund (10)

2515 Financial Accounting Services	<u>Elementary</u>	<u>Secondary</u>	<u>Federal</u>	<u>Total</u>
100 <u>Personnel Services – Salaries</u>				
100 Personnel Services – Salaries				39,343.50
Total Personnel Services – Salaries				\$39,343.50
200 <u>Personnel Services – Employee Benefits</u>				
210 Group Insurance – Contracted Provider				6,740.99
220 Social Security Contributions				2,921.25
230 PSERS Retirement Contributions				13,155.59
Total Personnel Services – Employee Benefits				\$22,817.83
300 <u>Purchased Professional and Technical Services</u>				
329 Professional Educational Services – Other				307.74
Total Purchased Professional and Technical Services				\$307.74
500 <u>Other Purchased Services</u>				
520 Insurance – General				4,356.98
Total Other Purchased Services				\$4,356.98
Total 2515 Financial Accounting Services				\$66,826.05

LEA : 123466403 Pottstown SD

Printed 2/6/2020 1:13:46 PM

General Fund (10)				
2519 Other Fiscal Services	<u>Elementary</u>	<u>Secondary</u>	<u>Federal</u>	<u>Total</u>
300 <u>Purchased Professional and Technical Services</u>				
329 Professional Educational Services – Other				848.00
330 Other Professional Services				7,539.00
390 Other Purchased Professional and Technical Services				10.00
Total Purchased Professional and Technical Services				\$8,397.00
400 <u>Purchased Property Services</u>				
440 Rentals				4,296.72
Total Purchased Property Services				\$4,296.72
500 <u>Other Purchased Services</u>				
520 Insurance – General				408.00
530 Communications				16,356.77
580 Travel				203.38
Total Other Purchased Services				\$16,968.15
600 <u>Supplies</u>				
610 General Supplies				4,581.51
Total Supplies				\$4,581.51
800 <u>Other Objects</u>				
890 Miscellaneous Expenditures				820.05
Total Other Objects				\$820.05
Total 2519 Other Fiscal Services				\$35,063.43

LEA : 123466403 Pottstown SD

Printed 2/6/2020 1:13:46 PM

General Fund (10)				
2520 Purchasing Services	<u>Elementary</u>	<u>Secondary</u>	<u>Federal</u>	<u>Total</u>
600 <u>Supplies</u>				
610 General Supplies				344.32
Total Supplies				\$344.32
Total 2520 Purchasing Services				\$344.32

LEA : 123466403 Pottstown SD

Printed 2/6/2020 1:13:46 PM

General Fund (10)

2530 Warehousing and Distributing Services	<u>Elementary</u>	<u>Secondary</u>	<u>Federal</u>	<u>Total</u>
300 <u>Purchased Professional and Technical Services</u>				
329 Professional Educational Services – Other				16,996.24
Total Purchased Professional and Technical Services				\$16,996.24
Total 2530 Warehousing and Distributing Services				\$16,996.24

LEA : 123466403 Pottstown SD

Printed 2/6/2020 1:13:46 PM

General Fund (10)

2540 Printing, Publishing and Duplicating Services	<u>Elementary</u>	<u>Secondary</u>	<u>Federal</u>	<u>Total</u>
400 <u>Purchased Property Services</u>				
440 Rentals				33,440.46
Total Purchased Property Services				\$33,440.46
600 <u>Supplies</u>				
610 General Supplies				23,661.39
Total Supplies				\$23,661.39
Total 2540 Printing, Publishing and Duplicating Services				\$57,101.85

LEA : 123466403 Pottstown SD

Printed 2/6/2020 1:13:46 PM

General Fund (10)				
2600 Operation and Maintenance of Plant Services	<u>Elementary</u>	<u>Secondary</u>	<u>Federal</u>	<u>Total</u>
100 <u>Personnel Services – Salaries</u>				
100 Personnel Services – Salaries				1,842,202.38
Total Personnel Services – Salaries				\$1,842,202.38
200 <u>Personnel Services – Employee Benefits</u>				
210 Group Insurance – Contracted Provider				396,416.43
220 Social Security Contributions				135,447.79
230 PSERS Retirement Contributions				593,825.07
250 Unemployment Compensation				42.04
260 Workers' Compensation				3,020.87
Total Personnel Services – Employee Benefits				\$1,128,752.20
300 <u>Purchased Professional and Technical Services</u>				
310 Official / Administrative Services				19,120.00
329 Professional Educational Services – Other				295.00
330 Other Professional Services				23,296.00
350 Security / Safety Services				281,749.42
390 Other Purchased Professional and Technical Services				13,618.06
Total Purchased Professional and Technical Services				\$338,078.48
400 <u>Purchased Property Services</u>				
410 Cleaning Services				146,044.17
420 Utility Services				535,383.52
430 Repairs and Maintenance Services				240,835.43
460 Extermination Services				6,616.90
490 Other Purchased Property Services				524.18
Total Purchased Property Services				\$929,404.20
500 <u>Other Purchased Services</u>				
523 General Property and Liability Insurance				27,485.00
529 Other Insurance				8,514.00
530 Communications				61,850.55
580 Travel				396.27
Total Other Purchased Services				\$98,245.82
600 <u>Supplies</u>				
610 General Supplies	307,300.38	204,866.93		512,167.31
620 Energy				203,587.90
650 Supplies & Fees – Technology Related				273.59
Total Supplies				\$716,028.80
700 <u>Property</u>				
752 Capital Equipment – Original and Additional				50,526.36
762 Capitalized Equipment - Replacement				6,654.32
790 Other Property				27,604.62
Total Property				\$84,785.30
800 <u>Other Objects</u>				

LEA : 123466403 Pottstown SD

Printed 2/6/2020 1:13:46 PM

General Fund (10)

2600 Operation and Maintenance of Plant Services	<u>Elementary</u>	<u>Secondary</u>	<u>Federal</u>	<u>Total</u>
800 <u>Other Objects</u>				
810 Dues and Fees				709.00
Total Other Objects				\$709.00
Total 2600 Operation and Maintenance of Plant Services	\$307,300.38	\$204,866.93		\$5,138,206.18

LEA : 123466403 Pottstown SD

Printed 2/6/2020 1:13:46 PM

General Fund (10)				
2610 Supervision of Operation and Maintenance of Plant Services	<u>Elementary</u>	<u>Secondary</u>	<u>Federal</u>	<u>Total</u>
100 <u>Personnel Services – Salaries</u>				
100 Personnel Services – Salaries				151,285.83
Total Personnel Services – Salaries				\$151,285.83
200 <u>Personnel Services – Employee Benefits</u>				
210 Group Insurance – Contracted Provider				34,904.37
220 Social Security Contributions				11,127.36
230 PSERS Retirement Contributions				46,616.66
Total Personnel Services – Employee Benefits				\$92,648.39
300 <u>Purchased Professional and Technical Services</u>				
330 Other Professional Services				584.00
Total Purchased Professional and Technical Services				\$584.00
500 <u>Other Purchased Services</u>				
523 General Property and Liability Insurance				27,485.00
529 Other Insurance				8,514.00
580 Travel				396.27
Total Other Purchased Services				\$36,395.27
600 <u>Supplies</u>				
610 General Supplies	633.07	422.04		1,055.11
Total Supplies	\$633.07	\$422.04		\$1,055.11
800 <u>Other Objects</u>				
810 Dues and Fees				229.50
Total Other Objects				\$229.50
Total 2610 Supervision of Operation and Maintenance of Plant Services	\$633.07	\$422.04		\$282,198.10

LEA : 123466403 Pottstown SD

Printed 2/6/2020 1:13:46 PM

General Fund (10)				
2611 Supervision of Operation and Maintenance of Plant Services – Head of Component	<u>Elementary</u>	<u>Secondary</u>	<u>Federal</u>	<u>Total</u>
100 <u>Personnel Services – Salaries</u>				
100 Personnel Services – Salaries				151,285.83
Total Personnel Services – Salaries				\$151,285.83
200 <u>Personnel Services – Employee Benefits</u>				
210 Group Insurance – Contracted Provider				34,904.37
220 Social Security Contributions				11,127.36
230 PSERS Retirement Contributions				46,616.66
Total Personnel Services – Employee Benefits				\$92,648.39
300 <u>Purchased Professional and Technical Services</u>				
330 Other Professional Services				584.00
Total Purchased Professional and Technical Services				\$584.00
500 <u>Other Purchased Services</u>				
523 General Property and Liability Insurance				27,485.00
529 Other Insurance				8,514.00
580 Travel				396.27
Total Other Purchased Services				\$36,395.27
600 <u>Supplies</u>				
610 General Supplies	633.07	422.04		1,055.11
Total Supplies	\$633.07	\$422.04		\$1,055.11
800 <u>Other Objects</u>				
810 Dues and Fees				229.50
Total Other Objects				\$229.50
Total 2611 Supervision of Operation and Maintenance of Plant Services – Head of Component	\$633.07	\$422.04		\$282,198.10

LEA : 123466403 Pottstown SD

Printed 2/6/2020 1:13:46 PM

General Fund (10)				
2620 Operation of Buildings Services	<u>Elementary</u>	<u>Secondary</u>	<u>Federal</u>	<u>Total</u>
100 <u>Personnel Services – Salaries</u>				
100 Personnel Services – Salaries				1,377,428.28
Total Personnel Services – Salaries				\$1,377,428.28
200 <u>Personnel Services – Employee Benefits</u>				
210 Group Insurance – Contracted Provider				280,493.82
220 Social Security Contributions				101,504.64
230 PSERS Retirement Contributions				446,940.34
250 Unemployment Compensation				42.04
260 Workers' Compensation				3,020.87
Total Personnel Services – Employee Benefits				\$832,001.71
300 <u>Purchased Professional and Technical Services</u>				
310 Official / Administrative Services				19,120.00
390 Other Purchased Professional and Technical Services				13,323.06
Total Purchased Professional and Technical Services				\$32,443.06
400 <u>Purchased Property Services</u>				
410 Cleaning Services				41,049.91
420 Utility Services				535,383.52
430 Repairs and Maintenance Services				215,847.12
460 Extermination Services				6,616.90
Total Purchased Property Services				\$798,897.45
500 <u>Other Purchased Services</u>				
530 Communications				61,850.55
Total Other Purchased Services				\$61,850.55
600 <u>Supplies</u>				
610 General Supplies	260,894.66	173,929.77		434,824.43
620 Energy				196,252.61
650 Supplies & Fees – Technology Related				273.59
Total Supplies	\$260,894.66	\$173,929.77		\$631,350.63
700 <u>Property</u>				
752 Capital Equipment – Original and Additional				7,221.36
762 Capitalized Equipment - Replacement				3,676.00
790 Other Property				27,604.62
Total Property				\$38,501.98
800 <u>Other Objects</u>				
810 Dues and Fees				479.50
Total Other Objects				\$479.50
Total 2620 Operation of Buildings Services	\$260,894.66	\$173,929.77		\$3,772,953.16

LEA : 123466403 Pottstown SD

Printed 2/6/2020 1:13:46 PM

General Fund (10)				
2630 Care and Upkeep of Grounds Services	<u>Elementary</u>	<u>Secondary</u>	<u>Federal</u>	<u>Total</u>
100 <u>Personnel Services – Salaries</u>				
100 Personnel Services – Salaries				94,119.18
Total Personnel Services – Salaries				\$94,119.18
200 <u>Personnel Services – Employee Benefits</u>				
210 Group Insurance – Contracted Provider				26,602.38
220 Social Security Contributions				6,894.29
230 PSERS Retirement Contributions				31,467.09
Total Personnel Services – Employee Benefits				\$64,963.76
400 <u>Purchased Property Services</u>				
410 Cleaning Services				104,994.26
430 Repairs and Maintenance Services				11,970.00
Total Purchased Property Services				\$116,964.26
600 <u>Supplies</u>				
610 General Supplies	26,843.67	17,895.78		44,739.45
Total Supplies	\$26,843.67	\$17,895.78		\$44,739.45
700 <u>Property</u>				
762 Capitalized Equipment - Replacement				2,978.32
Total Property				\$2,978.32
Total 2630 Care and Upkeep of Grounds Services	\$26,843.67	\$17,895.78		\$323,764.97

LEA : 123466403 Pottstown SD

Printed 2/6/2020 1:13:46 PM

General Fund (10)

2640 Care and Upkeep of Equipment Services	<u>Elementary</u>	<u>Secondary</u>	<u>Federal</u>	<u>Total</u>
400 <u>Purchased Property Services</u>				
490 Other Purchased Property Services				524.18
Total Purchased Property Services				\$524.18
600 <u>Supplies</u>				
610 General Supplies	943.52	629.02		1,572.54
Total Supplies	\$943.52	\$629.02		\$1,572.54
Total 2640 Care and Upkeep of Equipment Services	\$943.52	\$629.02		\$2,096.72

LEA : 123466403 Pottstown SD

Printed 2/6/2020 1:13:46 PM

General Fund (10)

2650 Vehicle Operation and Maintenance Services (Other Than Student Transportation Vehicles)	<u>Elementary</u>	<u>Secondary</u>	<u>Federal</u>	<u>Total</u>
400 <u>Purchased Property Services</u>				
430 Repairs and Maintenance Services				5,488.31
Total Purchased Property Services				\$5,488.31
600 <u>Supplies</u>				
610 General Supplies	538.73	359.16		897.89
620 Energy				7,335.29
Total Supplies	\$538.73	\$359.16		\$8,233.18
700 <u>Property</u>				
752 Capital Equipment – Original and Additional				43,305.00
Total Property				\$43,305.00
Total 2650 Vehicle Operation and Maintenance Services (Other Than Student Transportation Vehicles)	\$538.73	\$359.16		\$57,026.49

LEA : 123466403 Pottstown SD

Printed 2/6/2020 1:13:46 PM

General Fund (10)				
2660 Safety and Security Services	<u>Elementary</u>	<u>Secondary</u>	<u>Federal</u>	<u>Total</u>
100 <u>Personnel Services – Salaries</u>				
100 Personnel Services – Salaries				219,369.09
Total Personnel Services – Salaries				\$219,369.09
200 <u>Personnel Services – Employee Benefits</u>				
210 Group Insurance – Contracted Provider				54,415.86
220 Social Security Contributions				15,921.50
230 PSERS Retirement Contributions				68,800.98
Total Personnel Services – Employee Benefits				\$139,138.34
300 <u>Purchased Professional and Technical Services</u>				
329 Professional Educational Services – Other				295.00
330 Other Professional Services				22,712.00
350 Security / Safety Services				281,749.42
390 Other Purchased Professional and Technical Services				295.00
Total Purchased Professional and Technical Services				\$305,051.42
400 <u>Purchased Property Services</u>				
430 Repairs and Maintenance Services				7,530.00
Total Purchased Property Services				\$7,530.00
600 <u>Supplies</u>				
610 General Supplies	17,446.73	11,631.16		29,077.89
Total Supplies	\$17,446.73	\$11,631.16		\$29,077.89
Total 2660 Safety and Security Services	\$17,446.73	\$11,631.16		\$700,166.74

LEA : 123466403 Pottstown SD

Printed 2/6/2020 1:13:46 PM

General Fund (10)				
2700 Student Transportation Services	<u>Elementary</u>	<u>Secondary</u>	<u>Federal</u>	<u>Total</u>
100 <u>Personnel Services – Salaries</u>				
100 Personnel Services – Salaries				1,836.12
Total Personnel Services – Salaries				\$1,836.12
200 <u>Personnel Services – Employee Benefits</u>				
210 Group Insurance – Contracted Provider				348.27
220 Social Security Contributions				3,533.17
230 PSERS Retirement Contributions				5.26
260 Workers' Compensation				508.44
Total Personnel Services – Employee Benefits				\$4,395.14
300 <u>Purchased Professional and Technical Services</u>				
329 Professional Educational Services – Other				89,771.39
Total Purchased Professional and Technical Services				\$89,771.39
500 <u>Other Purchased Services</u>				
513 Contracted Carriers			18,739.14	2,296,464.52
516 Student Transportation Services From the IU				455,528.88
522 Automotive Liability Insurance				18,177.00
Total Other Purchased Services			\$18,739.14	\$2,770,170.40
600 <u>Supplies</u>				
610 General Supplies				3,571.61
Total Supplies				\$3,571.61
Total 2700 Student Transportation Services			\$18,739.14	\$2,869,744.66

LEA : 123466403 Pottstown SD

Printed 2/6/2020 1:13:46 PM

General Fund (10)				
2710 Supervision of Student Transportation Services	<u>Elementary</u>	<u>Secondary</u>	<u>Federal</u>	<u>Total</u>
200 <u>Personnel Services – Employee Benefits</u>				
210 Group Insurance – Contracted Provider				348.27
220 Social Security Contributions				3,330.58
260 Workers' Compensation				508.44
Total Personnel Services – Employee Benefits				\$4,187.29
300 <u>Purchased Professional and Technical Services</u>				
329 Professional Educational Services – Other				89,771.39
Total Purchased Professional and Technical Services				\$89,771.39
500 <u>Other Purchased Services</u>				
513 Contracted Carriers			18,739.14	2,174,638.86
516 Student Transportation Services From the IU				455,528.88
522 Automotive Liability Insurance				18,177.00
Total Other Purchased Services			\$18,739.14	\$2,648,344.74
600 <u>Supplies</u>				
610 General Supplies				3,571.61
Total Supplies				\$3,571.61
Total 2710 Supervision of Student Transportation Services			\$18,739.14	\$2,745,875.03

LEA : 123466403 Pottstown SD

Printed 2/6/2020 1:13:46 PM

General Fund (10)

2711 Supervision of Student Transportation Services – Head of Component	<u>Elementary</u>	<u>Secondary</u>	<u>Federal</u>	<u>Total</u>
200 <u>Personnel Services – Employee Benefits</u>				
210 Group Insurance – Contracted Provider				348.27
220 Social Security Contributions				3,330.58
Total Personnel Services – Employee Benefits				\$3,678.85
Total 2711 Supervision of Student Transportation Services – Head of Component				\$3,678.85

LEA : 123466403 Pottstown SD

Printed 2/6/2020 1:13:46 PM

General Fund (10)

2719 Supervision of Student Transportation Services – All Other Supervision	<u>Elementary</u>	<u>Secondary</u>	<u>Federal</u>	<u>Total</u>
200 <u>Personnel Services – Employee Benefits</u>				
260 Workers' Compensation				508.44
Total Personnel Services – Employee Benefits				\$508.44
300 <u>Purchased Professional and Technical Services</u>				
329 Professional Educational Services – Other				89,771.39
Total Purchased Professional and Technical Services				\$89,771.39
500 <u>Other Purchased Services</u>				
513 Contracted Carriers			18,739.14	2,174,638.86
516 Student Transportation Services From the IU				455,528.88
522 Automotive Liability Insurance				18,177.00
Total Other Purchased Services			\$18,739.14	\$2,648,344.74
600 <u>Supplies</u>				
610 General Supplies				3,571.61
Total Supplies				\$3,571.61
Total 2719 Supervision of Student Transportation Services – All Other Supervision			\$18,739.14	\$2,742,196.18

LEA : 123466403 Pottstown SD

Printed 2/6/2020 1:13:46 PM

General Fund (10)

2720 Vehicle Operation Services	<u>Elementary</u>	<u>Secondary</u>	<u>Federal</u>	<u>Total</u>
100 <u>Personnel Services – Salaries</u>				
100 Personnel Services – Salaries				1,836.12
Total Personnel Services – Salaries				\$1,836.12
200 <u>Personnel Services – Employee Benefits</u>				
220 Social Security Contributions				202.59
230 PSERS Retirement Contributions				5.26
Total Personnel Services – Employee Benefits				\$207.85
Total 2720 Vehicle Operation Services				\$2,043.97

LEA : 123466403 Pottstown SD

Printed 2/6/2020 1:13:46 PM

General Fund (10)				
2750 Nonpublic Transportation	<u>Elementary</u>	<u>Secondary</u>	<u>Federal</u>	<u>Total</u>
500 <u>Other Purchased Services</u>				
513 Contracted Carriers				121,825.66
Total Other Purchased Services				\$121,825.66
Total 2750 Nonpublic Transportation				\$121,825.66

LEA : 123466403 Pottstown SD

Printed 2/6/2020 1:13:46 PM

General Fund (10)				
2800 Support Services – Central	Elementary	Secondary	Federal	Total
100 Personnel Services – Salaries				
100 Personnel Services – Salaries				276,639.97
Total Personnel Services – Salaries				\$276,639.97
200 Personnel Services – Employee Benefits				
210 Group Insurance – Contracted Provider				64,471.43
220 Social Security Contributions				20,231.04
230 PSERS Retirement Contributions				92,480.73
Total Personnel Services – Employee Benefits				\$177,183.20
300 Purchased Professional and Technical Services				
329 Professional Educational Services – Other				3,800.00
Total Purchased Professional and Technical Services				\$3,800.00
500 Other Purchased Services				
580 Travel				1,055.04
Total Other Purchased Services				\$1,055.04
600 Supplies				
610 General Supplies				74,365.05
Total Supplies				\$74,365.05
800 Other Objects				
810 Dues and Fees			100.00	100.00
Total Other Objects			\$100.00	\$100.00
Total 2800 Support Services – Central			\$100.00	\$533,143.26

LEA : 123466403 Pottstown SD

Printed 2/6/2020 1:13:46 PM

General Fund (10)

2830 Staff Services

	<u>Elementary</u>	<u>Secondary</u>	<u>Federal</u>	<u>Total</u>
100 <u>Personnel Services – Salaries</u>				
100 Personnel Services – Salaries				159,574.37
Total Personnel Services – Salaries				\$159,574.37
200 <u>Personnel Services – Employee Benefits</u>				
210 Group Insurance – Contracted Provider				27,729.96
220 Social Security Contributions				11,550.88
230 PSERS Retirement Contributions				53,345.64
Total Personnel Services – Employee Benefits				\$92,626.48
300 <u>Purchased Professional and Technical Services</u>				
329 Professional Educational Services – Other				3,800.00
Total Purchased Professional and Technical Services				\$3,800.00
Total 2830 Staff Services				\$256,000.85

LEA : 123466403 Pottstown SD

Printed 2/6/2020 1:13:46 PM

General Fund (10)

2831 Supervision of Staff Services	<u>Elementary</u>	<u>Secondary</u>	<u>Federal</u>	<u>Total</u>
100 <u>Personnel Services – Salaries</u>				
100 Personnel Services – Salaries				157,857.92
Total Personnel Services – Salaries				\$157,857.92
200 <u>Personnel Services – Employee Benefits</u>				
210 Group Insurance – Contracted Provider				27,158.50
220 Social Security Contributions				11,425.31
230 PSERS Retirement Contributions				52,771.83
Total Personnel Services – Employee Benefits				\$91,355.64
Total 2831 Supervision of Staff Services				\$249,213.56

LEA : 123466403 Pottstown SD

Printed 2/6/2020 1:13:46 PM

General Fund (10)

2834 Staff Development Services – Non-Instructional, Certified Staff Only	<u>Elementary</u>	<u>Secondary</u>	<u>Federal</u>	<u>Total</u>
100 <u>Personnel Services – Salaries</u>				
100 Personnel Services – Salaries				1,716.45
Total Personnel Services – Salaries				\$1,716.45
200 <u>Personnel Services – Employee Benefits</u>				
210 Group Insurance – Contracted Provider				571.46
220 Social Security Contributions				125.57
230 PSERS Retirement Contributions				573.81
Total Personnel Services – Employee Benefits				\$1,270.84
Total 2834 Staff Development Services – Non-Instructional, Certified Staff Only				\$2,987.29

LEA : 123466403 Pottstown SD

Printed 2/6/2020 1:13:46 PM

General Fund (10)

2836 Staff Development Services – Non-Instructional, Non-Certified Staff Only	<u>Elementary</u>	<u>Secondary</u>	<u>Federal</u>	<u>Total</u>
300 <u>Purchased Professional and Technical Services</u>				
329 Professional Educational Services – Other				3,800.00
Total Purchased Professional and Technical Services				\$3,800.00
Total 2836 Staff Development Services – Non-Instructional, Non-Certified Staff Only				\$3,800.00

LEA : 123466403 Pottstown SD

Printed 2/6/2020 1:13:46 PM

General Fund (10)				
2840 Data Processing Services	<u>Elementary</u>	<u>Secondary</u>	<u>Federal</u>	<u>Total</u>
100 <u>Personnel Services – Salaries</u>				
100 Personnel Services – Salaries				117,065.60
Total Personnel Services – Salaries				\$117,065.60
200 <u>Personnel Services – Employee Benefits</u>				
210 Group Insurance – Contracted Provider				36,741.47
220 Social Security Contributions				8,680.16
230 PSERS Retirement Contributions				39,135.09
Total Personnel Services – Employee Benefits				\$84,556.72
500 <u>Other Purchased Services</u>				
580 Travel				856.69
Total Other Purchased Services				\$856.69
600 <u>Supplies</u>				
610 General Supplies				74,365.05
Total Supplies				\$74,365.05
Total 2840 Data Processing Services				\$276,844.06

LEA : 123466403 Pottstown SD

Printed 2/6/2020 1:13:46 PM

General Fund (10)

2850 State and Federal Agency Liaison Services	<u>Elementary</u>	<u>Secondary</u>	<u>Federal</u>	<u>Total</u>
500 <u>Other Purchased Services</u>				
580 Travel				198.35
Total Other Purchased Services				\$198.35
800 <u>Other Objects</u>				
810 Dues and Fees			100.00	100.00
Total Other Objects			\$100.00	\$100.00
Total 2850 State and Federal Agency Liaison Services			\$100.00	\$298.35

LEA : 123466403 Pottstown SD

Printed 2/6/2020 1:13:46 PM

General Fund (10)

2900 Other Support Services	<u>Elementary</u>	<u>Secondary</u>	<u>Federal</u>	<u>Total</u>
500 <u>Other Purchased Services</u>				
595 IU Payments By Withholding				17,369.95
Total Other Purchased Services				\$17,369.95
Total 2900 Other Support Services				\$17,369.95

LEA : 123466403 Pottstown SD

Printed 2/6/2020 1:13:46 PM

General Fund (10)

2910 Support Services Not Listed Elsewhere In the 2000 Series

<u>Elementary</u>	<u>Secondary</u>	<u>Federal</u>	<u>Total</u>
-------------------	------------------	----------------	--------------

500 Other Purchased Services

595 IU Payments By Withholding			17,369.95
--------------------------------	--	--	-----------

Total Other Purchased Services			\$17,369.95
---------------------------------------	--	--	--------------------

Total 2910 Support Services Not Listed Elsewhere In the 2000 Series			\$17,369.95
--	--	--	--------------------

LEA : 123466403 Pottstown SD

Printed 2/6/2020 1:13:54 PM

General Fund (10)	
3000 Operation of Non-Instructional Services	<u>Total</u>
100 <u>Personnel Services – Salaries</u>	
100 Personnel Services – Salaries	518,341.14
Total Personnel Services – Salaries	\$518,341.14
200 <u>Personnel Services – Employee Benefits</u>	
220 Social Security Contributions	39,610.05
230 PSERS Retirement Contributions	164,697.80
250 Unemployment Compensation	468.92
Total Personnel Services – Employee Benefits	\$204,776.77
300 <u>Purchased Professional and Technical Services</u>	
330 Other Professional Services	1,885.00
350 Security / Safety Services	6,992.00
390 Other Purchased Professional and Technical Services	25,903.25
Total Purchased Professional and Technical Services	\$34,780.25
400 <u>Purchased Property Services</u>	
440 Rentals	3,152.07
Total Purchased Property Services	\$3,152.07
500 <u>Other Purchased Services</u>	
510 Student Transportation Services	60,852.45
520 Insurance – General	3,223.00
530 Communications	1,037.30
580 Travel	1,211.57
Total Other Purchased Services	\$66,324.32
600 <u>Supplies</u>	
610 General Supplies	123,486.71
Total Supplies	\$123,486.71
800 <u>Other Objects</u>	
810 Dues and Fees	9,476.30
860 Grants To Municipal and Community Service Organizations	20,000.00
890 Miscellaneous Expenditures	150.00
Total Other Objects	\$29,626.30
Total 3000 Operation of Non-Instructional Services	\$980,487.56

LEA : 123466403 Pottstown SD

Printed 2/6/2020 1:13:54 PM

General Fund (10)				
3200 Student Activities	<u>Elementary</u>	<u>Secondary</u>	<u>Federal</u>	<u>Total</u>
100 <u>Personnel Services – Salaries</u>				
100 Personnel Services – Salaries				518,341.14
Total Personnel Services – Salaries				\$518,341.14
200 <u>Personnel Services – Employee Benefits</u>				
220 Social Security Contributions				39,610.05
230 PSERS Retirement Contributions				164,697.80
250 Unemployment Compensation				468.92
Total Personnel Services – Employee Benefits				\$204,776.77
300 <u>Purchased Professional and Technical Services</u>				
330 Other Professional Services				1,885.00
350 Security / Safety Services				6,992.00
390 Other Purchased Professional and Technical Services				25,903.25
Total Purchased Professional and Technical Services				\$34,780.25
400 <u>Purchased Property Services</u>				
440 Rentals				3,152.07
Total Purchased Property Services				\$3,152.07
500 <u>Other Purchased Services</u>				
510 Student Transportation Services				60,852.45
520 Insurance – General				3,223.00
530 Communications				1,037.30
580 Travel				1,211.57
Total Other Purchased Services				\$66,324.32
600 <u>Supplies</u>				
610 General Supplies				123,486.71
Total Supplies				\$123,486.71
800 <u>Other Objects</u>				
810 Dues and Fees				9,476.30
Total Other Objects				\$9,476.30
Total 3200 Student Activities				\$960,337.56

LEA : 123466403 Pottstown SD

Printed 2/6/2020 1:13:54 PM

General Fund (10)				
3300 Community Services	<u>Elementary</u>	<u>Secondary</u>	<u>Federal</u>	<u>Total</u>
800 <u>Other Objects</u>				
860 Grants To Municipal and Community Service Organizations				20,000.00
890 Miscellaneous Expenditures				150.00
Total Other Objects				\$20,150.00
Total 3300 Community Services				\$20,150.00

LEA : 123466403 Pottstown SD

Printed 2/6/2020 1:13:57 PM

General Fund (10)

4000 Facilities Acquisition, Construction and Improvement Services

Total

400 Purchased Property Services

450 Construction Services	796,033.47
Total Purchased Property Services	\$796,033.47
Total 4000 Facilities Acquisition, Construction and Improvement Services	\$796,033.47

LEA : 123466403 Pottstown SD

Printed 2/6/2020 1:13:57 PM

General Fund (10)

4600 Existing Building Improvement Services	<u>Elementary</u>	<u>Secondary</u>	<u>Federal</u>	<u>Total</u>
400 <u>Purchased Property Services</u>				
450 Construction Services				796,033.47
Total Purchased Property Services				\$796,033.47
Total 4600 Existing Building Improvement Services				\$796,033.47

LEA : 123466403 Pottstown SD

Printed 2/6/2020 1:14:02 PM

General Fund (10)

5000 Other Expenditures and Financing Uses

Total

800	<u>Other Objects</u>	
830	Interest	1,203,432.32
880	Refunds of Prior Years' Receipts	5,356.16
Total Other Objects		\$1,208,788.48
900	<u>Other Uses of Funds</u>	
910	Redemption of Principal	2,418,000.00
939	Other Fund Transfers	650,000.00
Total Other Uses of Funds		\$3,068,000.00
Total 5000 Other Expenditures and Financing Uses		\$4,276,788.48

LEA : 123466403 Pottstown SD

Printed 2/6/2020 1:14:02 PM

General Fund (10)

5100 Debt Service / Other Expenditures and Financing Uses	<u>Elementary</u>	<u>Secondary</u>	<u>Federal</u>	<u>Total</u>
800 <u>Other Objects</u>				
830 Interest				1,203,432.32
880 Refunds of Prior Years' Receipts				5,356.16
Total Other Objects				\$1,208,788.48
900 <u>Other Uses of Funds</u>				
910 Redemption of Principal				2,418,000.00
Total Other Uses of Funds				\$2,418,000.00
Total 5100 Debt Service / Other Expenditures and Financing Uses				\$3,626,788.48

LEA : 123466403 Pottstown SD

Printed 2/6/2020 1:14:02 PM

General Fund (10)

5110 Debt Service	<u>Elementary</u>	<u>Secondary</u>	<u>Federal</u>	<u>Total</u>
800 <u>Other Objects</u>				
830 Interest				1,203,432.32
Total Other Objects				\$1,203,432.32
900 <u>Other Uses of Funds</u>				
910 Redemption of Principal				2,418,000.00
Total Other Uses of Funds				\$2,418,000.00
Total 5110 Debt Service				\$3,621,432.32

LEA : 123466403 Pottstown SD

Printed 2/6/2020 1:14:02 PM

General Fund (10)

5130 Refund of Prior Year Revenues / Receipts	<u>Elementary</u>	<u>Secondary</u>	<u>Federal</u>	<u>Total</u>
800 <u>Other Objects</u>				
880 Refunds of Prior Years' Receipts				5,356.16
Total Other Objects				\$5,356.16
Total 5130 Refund of Prior Year Revenues / Receipts				\$5,356.16

LEA : 123466403 Pottstown SD

Printed 2/6/2020 1:14:02 PM

General Fund (10)

5200 Interfund Transfers – Out	<u>Elementary</u>	<u>Secondary</u>	<u>Federal</u>	<u>Total</u>
900 <u>Other Uses of Funds</u>				
939 Other Fund Transfers				650,000.00
Total Other Uses of Funds				\$650,000.00
Total 5200 Interfund Transfers – Out				\$650,000.00

LEA : 123466403 Pottstown SD

Printed 2/6/2020 1:14:02 PM

General Fund (10)

5230 Capital Projects Fund Transfers	<u>Elementary</u>	<u>Secondary</u>	<u>Federal</u>	<u>Total</u>
900 <u>Other Uses of Funds</u>				
939 Other Fund Transfers				650,000.00
Total Other Uses of Funds				\$650,000.00
Total 5230 Capital Projects Fund Transfers				\$650,000.00

LEA : 123466403 Pottstown SD

Printed 2/6/2020 1:13:55 PM

Athletic / School-Sponsored Extra Curricular Activities Fund (29)

3000 Operation of Non-Instructional Services	<u>Total</u>
300 <u>Purchased Professional and Technical Services</u>	
390 Other Purchased Professional and Technical Services	47,173.00
Total Purchased Professional and Technical Services	\$47,173.00
Total 3000 Operation of Non-Instructional Services	\$47,173.00

LEA : 123466403 Pottstown SD

Printed 2/6/2020 1:13:55 PM

Athletic / School-Sponsored Extra Curricular Activities Fund (29)

3200 Student Activities	<u>Elementary</u>	<u>Secondary</u>	<u>Federal</u>	<u>Total</u>
300 <u>Purchased Professional and Technical Services</u>				
390 Other Purchased Professional and Technical Services				47,173.00
Total Purchased Professional and Technical Services				\$47,173.00
Total 3200 Student Activities				\$47,173.00

LEA : 123466403 Pottstown SD

Printed 2/6/2020 1:13:49 PM

Debt Service Fund (40)

2000 Support Services

Total

800 Other Objects
810 Dues and Fees

377,232.00

Total Other Objects	\$377,232.00
Total 2000 Support Services	\$377,232.00

LEA : 123466403 Pottstown SD

Printed 2/6/2020 1:13:49 PM

Debt Service Fund (40)

2300 Support Services – Administration

Elementary Secondary Federal Total

800 Other Objects

810 Dues and Fees 377,232.00

Total Other Objects \$377,232.00

Total 2300 Support Services – Administration \$377,232.00

LEA : 123466403 Pottstown SD

Printed 2/6/2020 1:13:49 PM

Debt Service Fund (40)

2390 Other Administration Services

<u>Elementary</u>	<u>Secondary</u>	<u>Federal</u>	<u>Total</u>
-------------------	------------------	----------------	--------------

800 Other Objects

810 Dues and Fees				377,232.00
-------------------	--	--	--	------------

Total Other Objects				\$377,232.00
----------------------------	--	--	--	---------------------

Total 2390 Other Administration Services				\$377,232.00
---	--	--	--	---------------------

LEA : 123466403 Pottstown SD

Printed 2/6/2020 1:14:04 PM

Debt Service Fund (40)

5000 Other Expenditures and Financing Uses

Total

800 <u>Other Objects</u>	
830 Interest	104,389.00
Total Other Objects	\$104,389.00
900 <u>Other Uses of Funds</u>	
910 Redemption of Principal	15,892,000.00
939 Other Fund Transfers	2,507.00
Total Other Uses of Funds	\$15,894,507.00
Total 5000 Other Expenditures and Financing Uses	\$15,998,896.00

LEA : 123466403 Pottstown SD

Printed 2/6/2020 1:14:04 PM

Debt Service Fund (40)

5100 Debt Service / Other Expenditures and Financing Uses	<u>Elementary</u>	<u>Secondary</u>	<u>Federal</u>	<u>Total</u>
800 <u>Other Objects</u>				
830 Interest				104,389.00
Total Other Objects				\$104,389.00
900 <u>Other Uses of Funds</u>				
910 Redemption of Principal				15,892,000.00
Total Other Uses of Funds				\$15,892,000.00
Total 5100 Debt Service / Other Expenditures and Financing Uses				\$15,996,389.00

LEA : 123466403 Pottstown SD

Printed 2/6/2020 1:14:04 PM

Debt Service Fund (40)

5110 Debt Service

Elementary Secondary Federal Total

800 Other Objects

830 Interest 104,389.00

Total Other Objects \$104,389.00

Total 5110 Debt Service \$104,389.00

LEA : 123466403 Pottstown SD

Printed 2/6/2020 1:14:04 PM

Debt Service Fund (40)

5120 Debt Service – Refunded Bonds	<u>Elementary</u>	<u>Secondary</u>	<u>Federal</u>	<u>Total</u>
900 <u>Other Uses of Funds</u>				
910 Redemption of Principal				15,892,000.00
Total Other Uses of Funds				\$15,892,000.00
Total 5120 Debt Service – Refunded Bonds				\$15,892,000.00

LEA : 123466403 Pottstown SD

Printed 2/6/2020 1:14:04 PM

Debt Service Fund (40)

5200 Interfund Transfers – Out	<u>Elementary</u>	<u>Secondary</u>	<u>Federal</u>	<u>Total</u>
900 <u>Other Uses of Funds</u>				
939 Other Fund Transfers				2,507.00
Total Other Uses of Funds				\$2,507.00
Total 5200 Interfund Transfers – Out				\$2,507.00

LEA : 123466403 Pottstown SD

Printed 2/6/2020 1:14:04 PM

Debt Service Fund (40)

5210 General Fund Transfers

<u>Elementary</u>	<u>Secondary</u>	<u>Federal</u>	<u>Total</u>
-------------------	------------------	----------------	--------------

900 Other Uses of Funds

939 Other Fund Transfers				2,507.00
--------------------------	--	--	--	----------

Total Other Uses of Funds				\$2,507.00
----------------------------------	--	--	--	-------------------

Total 5210 General Fund Transfers				\$2,507.00
--	--	--	--	-------------------

LEA : 123466403 Pottstown SD

Printed 2/6/2020 1:14:16 PM

	<u>General Fund(10)</u>	<u>Public Purpose Trust(27)</u>	<u>Other Compt Approved (28)</u>	<u>Athletic / Activity(29)</u>	<u>Capital Reserve (690. 1850)(31)</u>
1000 <u>Instruction</u>					
1100 Regular Programs - Elementary / Secondary	19,867,382.53				
1200 Special Programs - Elementary / Secondary	13,725,901.81				
1300 Vocational Education	1,192,468.45				
1400 Other Instructional Programs - Elementary / Secondary	2,392,830.03				
1800 Pre-Kindergarten	2,789,028.85				
Total Instruction	\$39,967,611.67				
2000 <u>Support Services</u>					
2100 Support Services - Students	1,995,317.58				
2200 Support Services - Instructional Staff	2,184,604.66				
2300 Support Services - Administration	3,619,238.88				
2400 Support Services - Pupil Health	958,372.12				
2500 Support Services - Business	880,038.12				
2600 Operation and Maintenance of Plant Services	5,138,206.18				
2700 Student Transportation Services	2,869,744.66				
2800 Support Services - Central	533,143.26				
2900 Other Support Services	17,369.95				
Total Support Services	\$18,196,035.41				
3000 <u>Operation of Non-Instructional Services</u>					
3200 Student Activities	960,337.56			47,173.00	
3300 Community Services	20,150.00				
Total Operation of Non-Instructional Services	\$980,487.56			\$47,173.00	
4000 <u>Facilities Acquisition, Construction and Improvement Services</u>					
4600 Existing Building Improvement Services	796,033.47				
Total Facilities Acquisition, Construction and Improvement	\$796,033.47				
5000 <u>Other Expenditures and Financing Uses</u>					
5100 Debt Service / Other Expenditures and Financing Uses	3,626,788.48				
5200 Interfund Transfers - Out	650,000.00				
Total Other Expenditures and Financing Uses	\$4,276,788.48				
TOTAL ACTUAL EXPENDITURES & OTHER FINANCING USES	\$64,216,956.59			\$47,173.00	

LEA : 123466403 Pottstown SD

Printed 2/6/2020 1:14:16 PM

	<u>Capital Reserve (1431)(32)</u>	<u>Other Capital Projects Fund(39)</u>	<u>Debt Service(40)</u>	<u>Permanent(90)</u>	<u>Total</u>
1000 <u>Instruction</u>					
1100 Regular Programs - Elementary / Secondary					19,867,382.53
1200 Special Programs - Elementary / Secondary					13,725,901.81
1300 Vocational Education					1,192,468.45
1400 Other Instructional Programs - Elementary / Secondary					2,392,830.03
1800 Pre-Kindergarten					2,789,028.85
Total Instruction					\$39,967,611.67
2000 <u>Support Services</u>					
2100 Support Services - Students					1,995,317.58
2200 Support Services - Instructional Staff					2,184,604.66
2300 Support Services - Administration			377,232.00		3,996,470.88
2400 Support Services - Pupil Health					958,372.12
2500 Support Services - Business					880,038.12
2600 Operation and Maintenance of Plant Services					5,138,206.18
2700 Student Transportation Services					2,869,744.66
2800 Support Services - Central					533,143.26
2900 Other Support Services					17,369.95
Total Support Services			\$377,232.00		\$18,573,267.41
3000 <u>Operation of Non-Instructional Services</u>					
3200 Student Activities					1,007,510.56
3300 Community Services					20,150.00
Total Operation of Non-Instructional Services					\$1,027,660.56
4000 <u>Facilities Acquisition, Construction and Improvement Services</u>					
4600 Existing Building Improvement Services					796,033.47
Total Facilities Acquisition, Construction and Improvement					\$796,033.47
5000 <u>Other Expenditures and Financing Uses</u>					
5100 Debt Service / Other Expenditures and Financing Uses			15,996,389.00		19,623,177.48
5200 Interfund Transfers - Out			2,507.00		652,507.00
Total Other Expenditures and Financing Uses			\$15,998,896.00		\$20,275,684.48
TOTAL ACTUAL EXPENDITURES & OTHER FINANCING USES			\$16,376,128.00		\$80,640,257.59

LEA : 123466403 Pottstown SD

Printed 2/6/2020 1:14:23 PM

PSERS Salary Data (Salary Data should relate to the General Fund only)

Amount	Description	Amount
	Total Salary Base for salaries subject to PSERS withholding	22,314,212.15
	Total Federally Funded salaries subject to PSERS withholding	1,405,619.45

Title I Expenditure Data

Amount	Description	Amount
	Expenditures Funded with Current Title I Funds	1,413,325.00
	Expenditures Funded with Carry over Title I Funds	
Total Title I Expenditure Data		\$1,413,325.00

Benefits for Staff Relative to Collective Bargaining Agreements

	OBJECT	COVERED	NOT COVERED	TOTAL
10 General Fund				
	211 Medical Insurance			
	212 Dental Insurance	113,090.28	171,046.64	284,136.92
	215 Eye Care Insurance	3,913.95	20,881.53	24,795.48
	216 Prescription Insurance			
	271 Self-Insurance Medical Benefits	2,250,402.67	1,123,182.96	3,373,585.63
	272 Self-Insurance Dental Benefits			
	275 Self-Insurance Eye Care Benefits			
	276 Self-Insurance Prescription Benefits	613,474.26	534,627.77	1,148,102.03
	FUND TOTAL	\$2,980,881.16	\$1,849,738.90	\$4,830,620.06
50 Enterprise Fund				
	211 Medical Insurance			
	212 Dental Insurance		12,618.49	12,618.49
	215 Eye Care Insurance		850.03	850.03
	216 Prescription Insurance			
	271 Self-Insurance Medical Benefits		116,878.08	116,878.08
	272 Self-Insurance Dental Benefits			
	275 Self-Insurance Eye Care Benefits			
	276 Self-Insurance Prescription Benefits		39,465.22	39,465.22
	FUND TOTAL		\$169,811.82	\$169,811.82
60 Internal Service Fund	No Self Insurance data to report			
	211 Medical Insurance			
	212 Dental Insurance			
	215 Eye Care Insurance			
	216 Prescription Insurance			
	271 Self-Insurance Medical Benefits			
	272 Self-Insurance Dental Benefits			
	275 Self-Insurance Eye Care Benefits			
	276 Self-Insurance Prescription Benefits			
	FUND TOTAL			
Total of All Funds		\$2,980,881.16	\$2,019,550.72	\$5,000,431.88

LEA : 123466403 Pottstown SD

Printed 2/6/2020 1:14:27 PM

Function	Special Education (Prior Year)	Nonspecial Education (Prior Year)	Total (Prior Year)	Special Education (Current Year)	Nonspecial Education (Current Year)	Total (Current Year)
2120 Guidance Services		494,202.17	494,202.17		477,855.47	477,855.47
2140 Psychological Services	594,689.17	148,672.29	743,361.46	639,206.44	159,801.61	799,008.05
2150 Speech Pathology and Audiology Services	542,507.30		542,507.30	567,892.18		567,892.18
2160 Social Work Services	32,036.63	21,357.75	53,394.38	27,559.31	18,372.87	45,932.18
2260 Instruction and Curriculum Development Services		431,773.53	431,773.53		352,596.01	352,596.01
2350 Legal and Accounting Services		6,567.50	6,567.50		8,660.86	8,660.86
2420 Medical Services	476,416.88	4,913.87	481,330.75	499,566.83	4,925.20	504,492.03
2440 Nursing Services		444,528.55	444,528.55		452,456.09	452,456.09
2700 Student Transportation Services	1,702,243.47	681,733.41	2,383,976.88	2,057,250.18	812,494.48	2,869,744.66
Total	\$3,347,893.45	\$2,233,749.07	\$5,581,642.52	\$3,791,474.94	\$2,287,162.59	\$6,078,637.53

LEA : 123466403 Pottstown SD

Printed 2/6/2020 1:14:30 PM

(PRINCIPAL AMOUNTS ONLY)								
<u>GOVERNMENTAL FUNDS/ ACTIVITIES</u>	Short-Term Borrowing	General Obligation Bonds/Notes	Authority Building Obligations	Other Long-Term Debt	Other Post- Employment Benefits (OPEB)	Compensated Absences	Net Pension Liability	Total
1. Debt at Beginning of Fiscal Year		49,631,000.00			11,351,129.00	575,444.00	90,431,292.00	151,988,865.00
2. Additional Debt Incurred During Year		16,355,000.00			356,562.00	428,742.00		17,140,304.00
3. Retirements and Repayments		18,310,000.00			543,641.00	591,488.00	7,768,349.00	27,213,478.00
4. Debt at End of Fiscal Year		47,676,000.00			11,164,050.00	412,698.00	82,662,943.00	141,915,691.00
5. Accreted Interest at End Of Fiscal Year								
6. Total Debt and Accreted Interest		47,676,000.00			11,164,050.00	412,698.00	82,662,943.00	141,915,691.00
7. Current Portion P&I - Due within 1 year		3,763,940.76						3,763,940.76
8. Interest Paid during current fiscal year		1,203,434.00						1,203,434.00

(PRINCIPAL AMOUNTS ONLY)								
<u>PROPRIETARY FUNDS</u>	Short-Term Borrowing	General Obligation Bonds/Notes	Authority Building Obligations	Other Long-Term Debt	Other Post- Employment Benefits (OPEB)	Compensated Absences	Net Pension Liability	Total
1. Debt at Beginning of Fiscal Year					151,377.00	24,317.35	1,826,708.00	2,002,402.35
2. Additional Debt Incurred During Year					122,456.00	7,426.00	65,105.00	194,987.00
3. Retirements and Repayments					6,878.00	7,244.00	161,756.00	175,878.00
4. Debt at End of Fiscal Year					266,955.00	24,499.35	1,730,057.00	2,021,511.35
5. Accreted Interest at End Of Fiscal Year								
6. Total Debt and Accreted Interest					266,955.00	24,499.35	1,730,057.00	2,021,511.35
7. Current Portion P&I - Due within 1 year								
8. Interest Paid during current fiscal year								

LEA : 123466403 Pottstown SD

Printed 2/6/2020 1:14:30 PM

Total Principal and Interest Payments Made by Your School - All Funds

Function	Fund		Principal (910)	Principal (920)	Interest (830)	Total (Principal +Interest)	Misc Other Uses (990)
5110	10	General Fund	2,418,000.00		1,203,432.32	3,621,432.32	
5110	20	Special Revenue Funds					
5110	30	Capital Projects Funds					
5110	40	Debt Service Fund			104,389.00	104,389.00	
5110	90	Permanent Fund					
5120	10	General Fund					
5120	20	Special Revenue Funds					
5120	30	Capital Projects Funds					
5120	40	Debt Service Fund	15,892,000.00			15,892,000.00	
Total Debt Payments - Governmental Funds			\$18,310,000.00		\$1,307,821.32	\$19,617,821.32	
Function	Fund		Principal (910)	Principal (920)	Interest (830)	Total (Principal +Interest)	
5110	50	Enterprise Fund					
5110	60	Internal Service Fund					
5120	50	Enterprise Fund					
5120	60	Internal Service Fund					
Total Debt Payments - Proprietary Funds							

LEA : 123466403 Pottstown SD

Printed 2/6/2020 1:14:30 PM

Debt Details
Governmental Funds/ Activities

Debt Category	Debt Issue Date (MM/YYYY)	Principal Amounts Only				Current Portion Due Within One Year (Principal and Interest)	Interest Paid During Fiscal Year
		Debt at Beginning of Fiscal Year	Additions	Reductions / Repayments	Debt at End of Fiscal Year		
General Obligation Bonds/Notes – CIB	03/2019		7,040,000.00		7,040,000.00	243,278.76	48,415.00
General Obligation Bonds/Notes – CIB	12/2018		9,315,000.00	85,000.00	9,230,000.00	1,121,325.00	79,972.00
General Obligation Bonds/Notes – CIB	10/2017	9,996,000.00		1,000.00	9,995,000.00	333,852.50	254,885.00
General Obligation Bonds/Notes – CIB	12/2016	9,800,000.00		50,000.00	9,750,000.00	280,047.50	230,798.00
General Obligation Bonds/Notes – CIB	12/2015	9,873,000.00		243,000.00	9,630,000.00	1,338,972.00	240,901.00
General Obligation Bonds/Notes – CIB	04/2014	6,710,000.00		6,710,000.00			140,435.00
General Obligation Bonds/Notes – CIB	10/2013	1,430,000.00		15,000.00	1,415,000.00	79,985.00	40,323.00
General Obligation Bonds/Notes – CIB	03/2012	860,000.00		860,000.00			17,200.00
General Obligation Bonds/Notes – CIB	11/2011	520,000.00		124,000.00	396,000.00	139,880.00	12,546.00
General Obligation Bonds/Notes – CIB	10/2010	830,000.00		830,000.00			24,132.00
General Obligation Bonds/Notes – CIB	10/2010	430,000.00		210,000.00	220,000.00	226,600.00	12,900.00
General Obligation Bonds/Notes – CIB	09/2000	9,182,000.00		9,182,000.00			100,927.00
Compensated Absences		575,444.00	428,742.00	591,488.00	412,698.00		
Other Post-Employment Benefits (OPEB)		11,351,129.00	356,562.00	543,641.00	11,164,050.00		
Net Pension Liability		90,431,292.00		7,768,349.00	82,662,943.00		
Totals for Debt Entered:		\$151,988,865.00	\$17,140,304.00	\$27,213,478.00	\$141,915,691.00	\$3,763,940.76	\$1,203,434.00

Debt Category	Debt Issue Date (MM/YYYY)	Principal Amounts Only				Current Portion Due Within One Year (Principal and Interest)	Interest Paid During Fiscal Year
		Debt at Beginning of Fiscal Year	Additions	Reductions / Repayments	Debt at End of Fiscal Year		
Compensated Absences		24,317.35	7,426.00	7,244.00	24,499.35		
Other Post-Employment Benefits (OPEB)		151,377.00	122,456.00	6,878.00	266,955.00		
Net Pension Liability		1,826,708.00	65,105.00	161,756.00	1,730,057.00		
Totals for Debt Entered:		\$2,002,402.35	\$194,987.00	\$175,878.00	\$2,021,511.35		

LEA : 123466403 Pottstown SD

Printed 2/6/2020 1:14:33 PM

General Fund (10)

Section 1: Tuition/Purchased Services as Reported within Expenditure Detail	Amount
Tuition Reported in General Fund Expenditures 1000-560	7,519,303.41
Purchased Services in General Fund Expenditures 1000-594 and 1000-597	473.47
Section 1 Total	\$7,519,776.88

Section 2: Tuition Paid to Institution Types During Fiscal Year	Tuition Paid For Nonspecial Education	Tuition Paid For Special Education	Total
1 1306 Institutions			
2 Institutionalized Children's Programs			
3 Juveniles Incarcerated in Adult Facilities			
4 Residential Treatment Facilities			
5 Other Local Education Agencies	298,263.53	55,149.09	353,412.62
6 Brick and Mortar Charter Schools	461,919.91	230,259.81	692,179.72
7 Cyber Charter Schools	1,393,660.79	1,152,513.05	2,546,173.84
8 Career and Technology Centers	24,367.21		24,367.21
9 Approved Private Schools		569,272.15	569,272.15
10 PA Chartered Schools for the Deaf and Blind			
11 Private Residential Rehabilitative Institutions	73,269.27	56,975.99	130,245.26
12 Juvenile Detention Centers			
13 Special Program Jointures			
14 Other Tuition Not Included Elsewhere In This Section	521,258.49	2,682,867.59	3,204,126.08
Section 2 Total	\$2,772,739.20	\$4,747,037.68	\$7,519,776.88

LEA : 123466403 Pottstown SD

Printed 2/6/2020 1:14:43 PM

Food Service / Cafeteria Operations Fund (51)

3000 Operation of Non-Instructional Services		<u>Total</u>
100 Personnel Services – Salaries		
100 Personnel Services – Salaries		571,233.04
Total Personnel Services – Salaries		\$571,233.04
200 Personnel Services – Employee Benefits		
210 Group Insurance – Contracted Provider		169,694.80
220 Social Security Contributions		40,685.61
230 PSERS Retirement Contributions		173,840.22
Total Personnel Services – Employee Benefits		\$384,220.63
400 Purchased Property Services		
430 Repairs and Maintenance Services		4,959.70
490 Other Purchased Property Services		6,854.12
Total Purchased Property Services		\$11,813.82
500 Other Purchased Services		
570 Food Service Management		445.73
580 Travel		232.96
Total Other Purchased Services		\$678.69
600 Supplies		
610 General Supplies		79,258.65
630 Food		979,481.43
Total Supplies		\$1,058,740.08
700 Property		
740 Depreciation		7,207.00
Total Property		\$7,207.00
800 Other Objects		
810 Dues and Fees		1,269.00
890 Miscellaneous Expenditures		14,272.00
Total Other Objects		\$15,541.00
Total 3000 Operation of Non-Instructional Services		\$2,049,434.26

LEA : 123466403 Pottstown SD

Printed 2/6/2020 1:14:43 PM

Food Service / Cafeteria Operations Fund (51)

3100 Food Services	<u>Elementary</u>	<u>Secondary</u>	<u>Federal</u>	<u>Total</u>
100 <u>Personnel Services – Salaries</u>				
100 Personnel Services – Salaries				571,233.04
Total Personnel Services – Salaries				\$571,233.04
200 <u>Personnel Services – Employee Benefits</u>				
210 Group Insurance – Contracted Provider				169,694.80
220 Social Security Contributions				40,685.61
230 PSERS Retirement Contributions				173,840.22
Total Personnel Services – Employee Benefits				\$384,220.63
400 <u>Purchased Property Services</u>				
430 Repairs and Maintenance Services				4,959.70
490 Other Purchased Property Services				6,854.12
Total Purchased Property Services				\$11,813.82
500 <u>Other Purchased Services</u>				
570 Food Service Management				445.73
580 Travel				232.96
Total Other Purchased Services				\$678.69
600 <u>Supplies</u>				
610 General Supplies				79,258.65
630 Food				979,481.43
Total Supplies				\$1,058,740.08
700 <u>Property</u>				
740 Depreciation				7,207.00
Total Property				\$7,207.00
800 <u>Other Objects</u>				
810 Dues and Fees				1,269.00
890 Miscellaneous Expenditures				14,272.00
Total Other Objects				\$15,541.00
Total 3100 Food Services				\$2,049,434.26

LEA : 123466403 Pottstown SD

Printed 2/6/2020 1:14:40 PM

Internal Service Fund (60)

2000 Support Services

Total

200	<u>Personnel Services – Employee Benefits</u>	
210	Group Insurance – Contracted Provider	5,905,445.00
Total Personnel Services – Employee Benefits		\$5,905,445.00
800	<u>Other Objects</u>	
810	Dues and Fees	229,804.00
Total Other Objects		\$229,804.00
Total 2000 Support Services		\$6,135,249.00

LEA : 123466403 Pottstown SD

Printed 2/6/2020 1:14:40 PM

Internal Service Fund (60)

2300 Support Services – Administration	<u>Elementary</u>	<u>Secondary</u>	<u>Federal</u>	<u>Total</u>
200 <u>Personnel Services – Employee Benefits</u>				
210 Group Insurance – Contracted Provider				5,905,445.00
Total Personnel Services – Employee Benefits				\$5,905,445.00
800 <u>Other Objects</u>				
810 Dues and Fees				229,804.00
Total Other Objects				\$229,804.00
Total 2300 Support Services – Administration				\$6,135,249.00

LEA : 123466403 Pottstown SD

Printed 2/6/2020 1:14:40 PM

Internal Service Fund (60)

2390 Other Administration Services	<u>Elementary</u>	<u>Secondary</u>	<u>Federal</u>	<u>Total</u>
200 <u>Personnel Services – Employee Benefits</u>				
210 Group Insurance – Contracted Provider				5,905,445.00
Total Personnel Services – Employee Benefits				\$5,905,445.00
800 <u>Other Objects</u>				
810 Dues and Fees				229,804.00
Total Other Objects				\$229,804.00
Total 2390 Other Administration Services				\$6,135,249.00

	<u>Food Service(51)</u>	<u>Child Care Operations(52)</u>	<u>Other Enterprise(58)</u>	<u>Internal Service(60)</u>	<u>Total</u>
2000 <u>Support Services</u>					
2300 Support Services - Administration				6,135,249.00	6,135,249.00
Total Support Services				\$6,135,249.00	\$6,135,249.00
3000 <u>Operation of Non-Instructional Services</u>					
3100 Food Services	2,049,434.26				2,049,434.26
Total Operation of Non-Instructional Services	\$2,049,434.26				\$2,049,434.26
TOTAL ACTUAL EXPENDITURES & OTHER FINANCING USES	\$2,049,434.26			\$6,135,249.00	\$8,184,683.26

LEA : 123466403 Pottstown SD

Printed 2/6/2020 1:14:57 PM

Fund	School	School Number	Local Personnel	Local Nonpersonnel	State Personnel	State Nonpersonnel	Federal Personnel	Federal Nonpersonnel	Total	Explanation
10										
	Barth El Sch	3345	1,981,826.02	693,687.40	1,662,432.09	581,891.74	504,249.99	24,282.78	5,448,370.02	
	Franklin El Sch	3339	1,965,301.28	739,645.53	1,648,570.51	620,443.19	349,514.21	19,792.40	5,343,267.12	
	Lincoln El Sch	3341	1,915,121.27	661,602.15	1,606,477.58	554,977.40	385,973.53	19,832.26	5,143,984.19	
	Pottstown MS	3346	5,734,411.05	2,451,945.70	4,810,245.13	2,056,786.61	581,347.65	140,899.74	15,775,635.88	
	Pottstown SHS	3348	5,501,928.17	3,831,039.85	4,615,229.53	3,213,623.97	269,212.22	85,393.97	17,516,427.71	
	Rupert El Sch	3342	1,875,793.44	716,992.98	1,573,487.88	601,441.36	338,949.84	24,567.76	5,131,233.26	
Total			18,974,381.23	9,094,913.61	15,916,442.72	7,629,164.27	2,429,247.44	314,768.91	54,358,918.18	